

Link-Belt
EARTHMOVING • FORESTRY
MATERIAL HANDLING EQUIPMENT

460Lx

Operating Weight:

w/Fixed Sideframe: 101,200 lbs (45 900 kg)

w/Extendable Sideframe: 104,500 lbs (47 400 kg)

SAE Net Horsepower: 316 HP (235 kW)

Bucket Range: 1.58 - 4.05 cu. yd. (1.21 - 3.10 cu. m.)



Designed for Durability and Performance...

Smarter. Faster. Better.

Inte-LX® or **Intelligent LX** is the most advanced technology to date. Inte-LX® maximizes the balance between speed, power, and fuel efficiency. *Page 4*

First Electronic Engine Control in an Excavator

This results in increased responsiveness to the job requirements; faster cycle times, increased fuel efficiency, cleaner and quieter. *Page 6*

Reduced Maintenance and Extended Component Life

The Nephron® Filtration system means less wear and tear on the hydraulic components, reducing hydraulic system breakdowns and maintenance costs.

Page 8

Faster Cycle Times

A smarter more efficient hydraulic system uses dual pump flow, auto power swing and regenerative circuits for increased productivity. *Page 5*

Anti-Theft System

To protect your investment, a password protected anti-theft system comes as standard equipment and can be activated at the users choice. *Page 4*

Superior Serviceability

On-board diagnostics with memory and fewer hydraulic oil changes result in superior serviceability. *Page 8*

Exceptional Travel Performance

High torque travel motors automatically shift to provide increased tractive effort when operating in difficult ground conditions. *Page 7*

Maximized Operator Comfort

The industry's largest cab providing low noise, climate controlled heat and air conditioning, standard. *Page 3*

Auto Power-Up

Auto power-up automatically increases system pressure by 9% to power through tough ground or when lifting a heavy load. *Page 4*

Cleaner Side-Wall Cuts

With Auto Power-Swing, Inte-LX® automatically prioritizes swing torque when simultaneously working the swing and attachment. *Page 5*

Low Ground Pressure and Exceptional Stability

LC undercarriage for low ground pressure and stability incorporates heavy-duty excavator style components. *Page 7*

Long Life Pin and Bushing Design

Chrome pins and grease impregnated bushings at the boom foot and the boom to arm connection hold up to the torsional stresses at these key attachment points and reduces the greasing interval. *Page 7*

Heavy Duty Boom and Arm

Built to handle powerful breakout forces, strong lifting capacities and the stresses of allied attachments. *Page 7*



Operator's Control Station

Large, Low Noise Cab Design

A wide cab design provides expanded leg and elbow room. **Six silicon filled isolation mounts** float the entire cab above the noise and vibration of an already quiet machine greatly reducing operator fatigue. Large entry door and access width makes entering and exiting the cab a breeze.

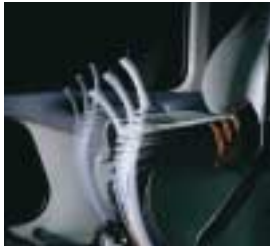
Control Panel

Many machine function switches are concentrated in a panel in clear view and easy reach of the operator.

Tilting Console and Sliding Seat

The seat slides independently of the control consoles to assure optimal joystick positions at all times.

The joysticks can be tilted to any of three settings, allowing the operator to work in the most comfortable position. The entire platform can then be moved forward or backward for best foot pedal positioning.



Panoramic Visibility

This cab provides more window space than ever. Even the sunroof is large. The Operator's "office with a view" has rear and side windows made of LEXAN® MARGUARD™. Standard vandal covers protect the safety glass front windows and stow on top when you're working.

Informative LCD Monitor

Large size LCD Monitor displays graphically a wide range of operating information such as; engine temperature, hydraulic oil temperature, fuel level, travel speed, work mode and engine idle. Additional messages include system/machine warnings and service due messages in your choice of English and 13 other languages. Backlit illumination ensures displays are always readable – day and night.



All Weather Visibility

With built-in washer and intermittent speed control, the wiper keeps your windshield clear, whatever the condition outside. The "rise-up" design takes the wiper arm and blade out of the line of sight when its not in use, plus lifts the blade from the cab surface so that it doesn't freeze to the cab in icy weather.

Fresh Air Induction-Type Climate Control

LX provides exceptional heating/cooling capabilities with a climate control system that automatically regulates the temperature for the operator's comfort. Now with 6 vents, LX Series excavators provide exceptional air circulation for optimum operator comfort. Front-side air outlet and defroster ensure a comfortable operating environment while the open/close type rear window further improves the ventilation.



Best Seat at the Site

The KAB 515 seat adjusts to your size and comfort. The semi-bucket seat provides firm support and comfort with armrests, adjustable seat suspension, adjustable lumbar support, and durable urethane cushions.

Tripmeter

In addition to the hour meter, LX has added a Tripmeter. Every job or application can be measured.

AM/FM Stereo Radio

Standard equipment.

Emergency Escape Window

Allows operator to escape from the rear window in case of emergency.

Inte-LX®

Inte-LX®, the intelligent computer command control system monitors hydraulic output, pressures, and regulates engine performance for the maximum balance between speed, power and fuel efficiency needed to handle the job.

Auto Power-Up

The LX series can quickly respond to changes in operating conditions, automatically supplying a power increase, without operator interaction and regardless of the work mode. Hydraulic pressure sensors detect resistance and pressure is increased by 9% for 8 seconds. Auto Power-Up stays on 100% of the time in the "L" mode.

Anti-Theft Device

Your Link-Belt distributor can set up your Inte-LX® control system to include a password protection feature that requires the password to start and run the machine.

One-Touch and Auto Idle Control

When user-preset time has elapsed after leaving the control handles in the neutral position, auto-idling automatically drops the engine to idle speed (900 rpm). Or, you can choose to use the one-touch idling switch, located at the top of the right controller so that you are always in control.



Operating Modes

The LX series enables the operator to have a choice on how the machine is operated. Simply choose the work mode that matches the machine's output to the job application. Five operating modes are available.

A: Auto-Mode

The most revolutionary approach to maximizing power & fuel efficiency available today. Just select the Auto-Mode with the switch panel. Using actual working pressure readings, Inte-LX® instantly changes modes assuring the best combination of speed and power while you can stay focused on the work at hand.

H: Heavy Mode

For heavy excavation or whenever you need extra power and maximum speed.

S: Standard Mode

For standard digging and loading operations reducing fuel consumption.

L: Lift Mode

For lifting and other operations that need fingertip accuracy.



Allied Attachment Work Mode

Automatically adjusts engine speed and pump output to match additional attachments such as hammers. The engine rpm's are presettable to match the hydraulic requirements.

On-Board Diagnostics

An on-board diagnostic system allows service personnel to quickly analyze up to 148 items in four categories;

- **Machine Status:** The diagnostic system provides a detailed view of pump pressure, engine rpm, water temperature, oil temperature, fuel temperature, throttle setting and ongoing operating functions such as auto power-up and auto-mode.
- **Troubleshooting:** Service personnel can trace electrical faults such as sensor failures and harness damage.
- **History:** An on-going record of machine faults is stored in the computer including the hour meter reading at time of the fault to assist in the diagnostics procedure.
- **Systems Configuration:** Service personnel can change machine operating characteristics such as; time delay for auto-idle, language selection, and engine rpm preset for allied attachment mode.

Performance

Advanced Hydraulic System

Top-of-the-Class Cycle Times/Fuel Efficient

The LX Series hydraulic system efficiently delivers power, speed and control when and where it's needed. Fuel consumption and cycle times are more efficient in swing/dump operations over conventional models. This is accomplished through reducing system pressure loss, re-using return oil and providing double pump flow during key operations.

Regeneration System

By re-using the returning oil from the arm and the boom, ground excavating operation speed is increased.

Two Hydraulic Return Lines

Two hydraulic returns lines mean faster speed in the system, and reduces back pressure build-up.

2 Speed Boom and Arm

The 2-speed boom lifting and arm opening and closing function provides the LX series with top-of-its-class lifting speed especially in swing/excavating simultaneous operations such as truck loading.

Auto Power-Swing

This patent pending design incorporates a selector valve that helps maintain attachment and hydraulic flow to achieve excellent swing and digging forces in side wall-cut operations. In normal digging when side pressure is not needed, LX sends all the flow to the attachment always insuring the best performance for either operation.

Cushioned Swing

This built-in special cushion valve greatly reduces the shock and vibration at the end of each swing cycle.

Cushioned Attachment Control

In addition to having cushioned cylinders, selectable cushioned attachment control lets you smooth out the attachment movements. A cushion valve in the boom and arm circuits reduce shock loading and vibration during attachment operation.

Free Swing

Allows the operator to disengage the swing brake providing crane-like precision and control when handling loads.

Single Pedal Travel

Allows the operator to engage both tracks at the same time using only one pedal. This keeps the machine in line with the ditch and provides safety and ease in loading/unloading the machine for transport.

Automatic Speed Shifting

When operating in difficult travel conditions, the travel motor automatically downshifts from high to low speed for increased tractive effort and then automatically returns to high speed when travel conditions permit.

Fuel Tank Capacity

The LX Series fuel tank provides the capacity to reduce refueling frequency, allowing for an extended work day.



Dependable Isuzu Power



Shown w/optional counterweight removal system

First In Class

The 460 LX is the first excavator in its class to utilize an electronic engine control function. By optimizing the level of fuel injection to match the load, this responsive new system assures more efficient use of fuel, plus by keeping the engine closer to the target engine speed, less lugging takes place so cycle times are faster, exhaust noise, vibration, and smoke are reduced making the environment in the cab and around the machine cleaner and quieter.

Electronic Engine Control (EEC)

Inte-LX® maintains engine rpm's when load demands change. Engines equipped with mechanical governors spike rpm's up-and-down when operating loads increase and decrease. This phenomena causes engines to consume extra fuel and be louder.

Tier II Compliant

LX engines meet EPA Tier II standards requirements.

Idle Start

At start-up, the engine defaults to idle regardless of throttle position. This prevents over revving a cold engine, helping to extend its service life.

Low Idle Up

When low temperatures or other conditions reduce engine rpm to a point that alternator output won't keep the battery charged, Inte-LX® automatically increases the idle speed from 900 to 1100 rpm keeping the batteries fully charged.

Auto Engine Warm-Up

If the engine temperature is low following start-up, the auto warm-up system will operate automatically and continue with engine speed increasing gradually until normal engine operating temperatures are reached.

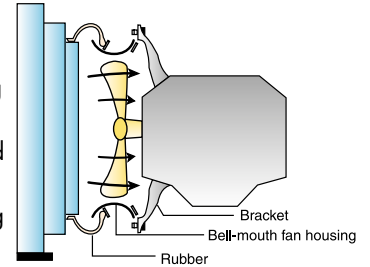
Air Filtration

LX Series engines are equipped with a dual element air filter with an evacuator cup, and restriction indicator for ease of maintenance.

Bell-Mouth Type Fan Housing

Since the bell-mouth shaped fan housing is secured to the engine, there is less clearance

between the fan and the fan housing, assuring a smoother air flow with reduced noise and increased cooling capability.



Larger Muffler

The LX series features a larger muffler which absorbs more sound and makes this the quietest Link-Belt yet.

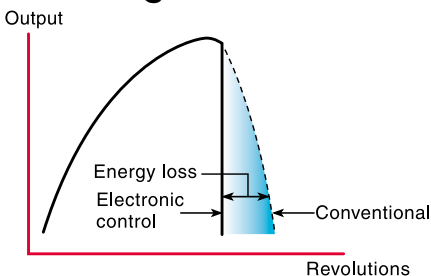
Emergency Engine Shutdown

In emergency situations, the engine can be shut down with the push of a switch located on the control panel in the cab. This switch must be re-engaged prior to restarting the engine.

Engine Product Support

Isuzu North America offers 24-hour access to their full line of engine parts through 2 regional distribution centers, 27 Master Distributors and 690 Authorized Service Dealers.

Advantages of EEC



Maintaining engine revolution at a fixed rate regardless of the load prevents the energy loss that occurs when shifting cycle times to accommodate higher or lower loads.

Low Fuel Consumption

The electronic governor responds to changes in operating loads quicker than a mechanical governor. As a result, EEC regulates the amount of fuel injection accurately and quickly.

Lower, Cleaner Emissions

Low fuel consumption results in high ignition efficiency (cleaner emission) and low emissions.

Low Sound Levels

At high idle, EEC can control engine speed at rated horsepower. This means the engine doesn't overrun, resulting in lower sound levels.

Low Vibration

EEC causes engine rpm to be stable, resulting in low vibration.

Upper and Attachments

Powerful Breakout Forces

Deep and wide box sections of high yield steel and deep groove welding hold up to high breakout forces, strong lifting capacities and the stresses of **allied attachments** such as hammers, thumbs, compactors, shears, grapples and crushers.

Strength and Durability

LX heavy duty booms and arms have internal baffles which provide better strength and durability to withstand torsional loads.

Improved Pin and Bushing Life

Chrome plated boom foot and boom to arm pins mounted in grease impregnated brass bushings make a durable and long lasting connection at the two highest stress points on the attachment. This also makes it

possible to extend the lubrication interval on this type of pin to once every 6 months or 1,000 hours of operation, whichever comes first.



- A. The surface of the bushing is stratified with a solid lubricant in hard brass to protect the parts from abrasion.
- B. The pin's surface is plate-processed to increase hardness and protect from abrasion
- C. The original dust seal is double-structured to keep out dust and dirt and protect from subsequent abrasion.

Four Arm Choices and a wide variety of buckets provide the reach and breakout forces for optimum productivity.

Optional Hydraulic Counterweight Removal System

Allows easy removal of the counterweight. Simply remove the counterweight securing bolts, and flip two selector switches to lower the counterweight to the ground or a trailer.

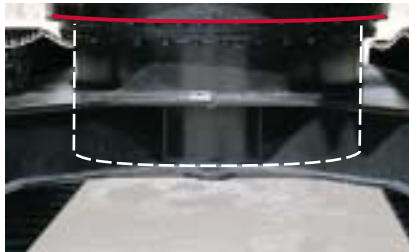


Undercarriage

LC Undercarriage

Long undercarriages incorporate heavy duty excavator style components and improve both stability and ground bearing pressure. The modified X style carbody is integrally welded for maximum strength and durability. High torque compact final drives keep you going up steep grades and through deep mud.

Bearing Tub



Built into the "X" style carbody is the turntable bearing "tub" which extends down through the top plate and is welded to the bottom of the carbody as well as the top for increased strength and durability.



Two-Speed Travel Motor

Offers smooth shifting and the needed pull when going up grades and making turns.

Strut Type Chain Links

There are no weak links in our chain. Struts reduce twisting and hold up to severe point loading when all of the machine weight is transferred through one roller. Track pins are greased and sealed for long life.

Track Rollers

Filled with synthetic oil to reduce heat build up and for long term reliability.

Track Adjustment

Adjustments are made easy with standard grease cylinder track adjusters and shock absorbing springs.

Side Frames

Incorporate a peaked saddle shape and large cut-outs on top for reduced dirt build-up.

Extendable/Retractable Side Frames

The 460 LX has optional extendable/retractable side frames. The optional side frames retract for shipping requirements. (When digging the sideframes must be extended)

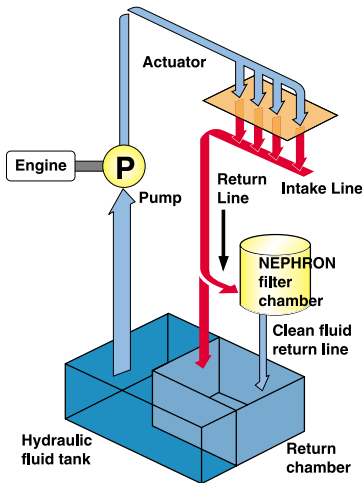
Reliability/Serviceability

Nephron® Filtration Extends the Service Life of the Hydraulic System

The Nephron® Filtration System eliminates contaminants of 1 micron or more in size. This significantly reduces hydraulic system breakdown and maintenance costs under normal usage. Less wear and tear on the hydraulic components means more years of reliable performance.

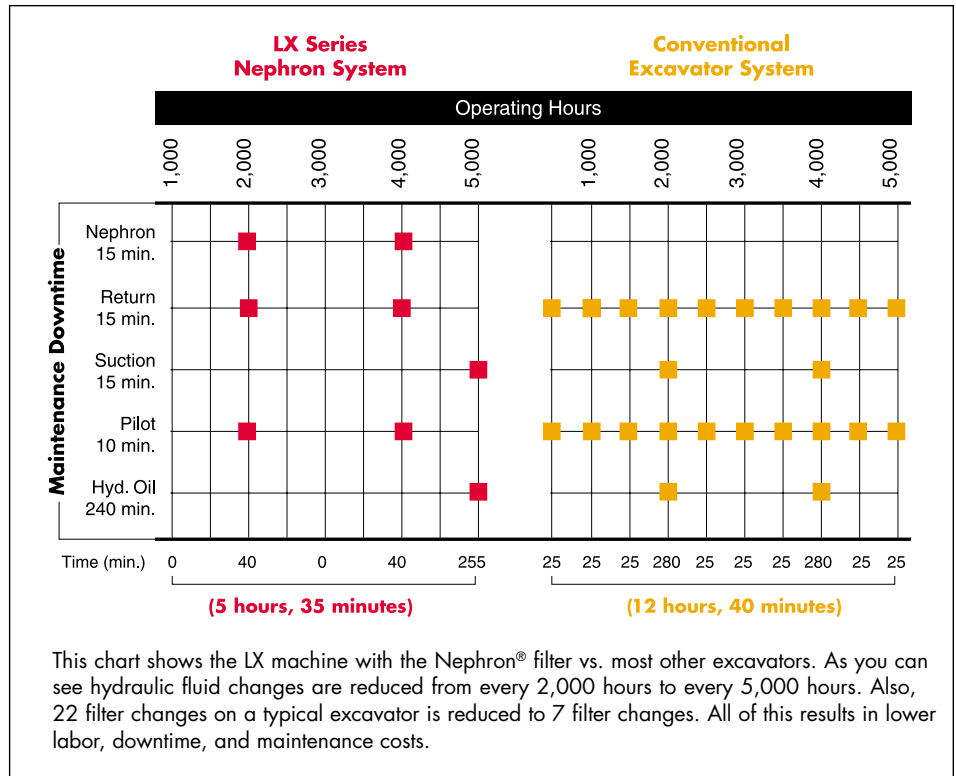
Nephron® Filter Advantages

1. Problems associated with hydraulic system contamination are substantially reduced. Machine down time and costs for repairing are saved as a consequence.
2. The interval of hydraulic oil replacement is extended to every 5000 hours.
3. The wear of hydraulic components is reduced, which lengthens the service life of the machine.



Inte-LX® On-Board Diagnostics

Inte-LX® monitors, stores, and displays information about the electrical and hydraulic systems such as; the current machine conditions, diagnostic warnings, history, and machine default settings. Information stored in Inte-LX® can also be downloaded to your personal computer using standard connectors.



Large wide opening access doors

These doors make it easy to get to all routine maintenance locations.

Hydraulic Fittings

"O" ring seals are used as hydraulic connectors to assure tighter seals.

Air Conditioner Air Intake Filter

This filter lets in fresh clean air and is mounted on the outside of the cab, enabling easy cleaning and replacement.

Sealed Automotive Style Wiring Harness

These harnesses are sealed to eliminate dirt and moisture that can cause a circuit to short out. Wiring is also color and number coded to make trouble shooting faster and easier.

Exceptional Customer/Product Support

Your investment in the Link-Belt LX Series Excavator is always protected. LBX Distribution is located from coast to coast; you're never far from quality service professionals. "Level Two" support takes the form of experienced factory service advisors, on-call at a moment's notice. And to expedite parts, LBX utilizes the proven parts system LINK-NET...an on-line, around the clock parts distribution solution. You can be assured that we have the parts when you need them.

Specifications

Engine

Isuzu AA-6SD1XQB Electric engine control, water cooled, 4-cycle diesel, 6 cylinder, turbocharged with air cooled intercooler, 600 CID (9 839 cc), 4.72" (120 mm) bore x 5.71" (145 mm) stroke. EPA Tier II compliant.

SAE net horsepower 316 HP (235 kW) @ 1,950 rpm
 Maximum torque .. 940 ft-lbs. (1,275 N-m) @ 1,600 rpm
 Starter Electric, 24V
 Alternator 50 amp
 Battery Cold Cranking 1146 amps
 Air cleaner Double element
 Governor Electronic

Fuel Usage*

Heavy - 10 gph (37.9 l/hr)
 Average - 8.3 gph (31.4 l/hr)
 Light - 6.7 gph (25.4 l/hr)

*Fuel economy varies widely depending upon application.

The "Heavy" category represents nearly continuous operation in tough digging applications. The "Light" category represents applications that utilize the machine about 50% of the time, in easier digging.

Hydraulic System

Two variable displacement axial piston pumps and one gear pump for pilot controls, with Link-Belt Inte-LX® Control System. Link-Belt Inte-LX® Control includes: electric engine control, five selectable working modes, automatic power-up, auto/one touch idling, automatic speed shifting, free swing, cushioned attachment, swing anti-braking system, and two safety lockout switches including gate lock.

Hydraulic Pumps

Two variable volume piston pumps provide power for attachment, swing and travel.

Maximum flow 2 x 95.1 gpm (2 x 360 l/min)
 Pilot pump max. flow 7.9 gpm (30 l/min)

Relief Valve Settings

Boom/arm/bucket 4,550 psi (320 kg/cm²)
 in Power-Up Mode 4,970 psi (350 kg/cm²)
 Swing circuit 4,260 psi (300 kg/cm²)
 Travel 4,970 psi (350 kg/cm²)

Hydraulic Cylinders – number of cylinders – bore x rod x stroke.

Boom 2 – 6.7" x 3.9" x 61.0"
 (170 mm x 115 mm x 1 550 mm)
 Arm 1 – 7.5" x 5.1" x 71.7"
 (190 mm x 130 mm x 1 820 mm)
 Excavator Bucket 1 – 6.5" x 4.5" x 50.6"
 (165 mm x 115 mm x 1 285 mm)

Oil Filtration

Nephron® filter 1 micron
 Return, pilot 10 micron
 Suction filter 105 micron

Control Valve One 4-spool valve and one 5-spool valve with auxiliary spool.

Cab and Controls

Cab mounted on 6 fluid filled mountings. Features include a safety glass front window and LEXAN® MARGARD™ rear and side windows, reclining/sliding suspension seat with headrest, armrests, lumbar support, heater, air conditioner, AM/FM stereo, cigarette lighter, pop-up skylight window, and intermittent wiper with washer. Front window slides upward for storage and the lower front window is removable. Control levers are located in 3-position tilting control consoles. Reliable soft-touch switches. Easy-to-read illuminated LCD service monitor keeps operator in touch with critical machine functions.

Heater output 20,240 BTU/hr (5 100 kcal/hr)
 A/C output 18,250 BTU/hr (4 600 kcal/hr)
 Noise level (inside cab) 73 dB(A)
 Noise level (exterior) 106 dB(A)

Swing

Planetary reduction powered by axial piston motor. Internal ring gear with grease cavity for swing pinion. Swing bearing is single-row shear type ball bearing. Swing cushion valve and dual stage relief valves for smooth swing deceleration and stops. Mechanical disc swing brake. Auto power swing.

Swing speed 0 – 9.0 rpm
 Tail swing 11' 11" (3.62 m)
 Swing torque 110,710 ft.-lbs. (15 310 kgf-m.)

Undercarriage

X-style carbody is integrally welded for strength and durability. Grease cylinder track adjusters with shock absorbing springs. LC undercarriage with sealed track, lubricated rollers and idlers. Three-bar grouser track shoes.

Fixed Sideframe:

Carrier rollers 2 per side
 Track rollers 9 per side
 Track link pitch 9.0" (228.6 mm)
 Shoes 50 per side
 Shoe width 35.4" (900 mm)
 Ground pressure 7.69 psi (.54 kg/cm²)

Extendable Sideframe:

Carrier rollers 3 per side
 Track rollers 9 per side
 Track link pitch 9.0" (228.6 mm)
 Shoes 50 per side
 Shoe width 35.4" (900 mm)
 Ground pressure 7.83 psi (.55 kg/cm²)

Travel System

Two-speed independent hydrostatic travel with compact axial piston motors for increased performance. Hydraulic motor powered output shaft coupled to a planetary reduction unit and track sprocket. All hydraulic components mounted within the width of side frame.

Automatic Downshift: When operating in difficult travel conditions, the travel motor automatically downshifts from high to low speed for increased tractive effort and then automatically returns to high speed when travel conditions permit.

Max. travel speed 1.9/3.3 mph (3.1/5.3 km/h)
 Traction force 78,860 lbs. (35 770 kgf)
 Gradeability 70%

Spring applied, hydraulically released disc parking brake built into each motor. Each travel motor equipped with counterbalance valve to prevent overspeeding down an incline and 3-stage reliefs for smooth starts and stops.

Lubricant and Coolant Capacity

Hydraulic tank 58 gal. (220 liters)
 Hydraulic system 119 gal. (450 liters)
 Final drive (per side) 4 gal. (15 liters)
 Swing drive 2.8 gal. (10.5 liters)
 Engine 8.7 gal. (33 liters)
 Fuel tank 161 gal. (610 liters)
 Cooling system 12 gal. (45.5 liters)

Attachment

Boom 22' 11" (6.98 m)

Available Arms **Digging Force***

- 11' 1" (3.38 m) 42,490 lbs. (19 270 kgf)
 in Auto Power-Up Mode .. 46,310 lbs. (21 010 kgf)
 - 8' 4" (2.53 m) 52,160 lbs. (23 660 kgf)
 in Auto Power-Up Mode .. 57,100 lbs. (25 900 kgf)
 - 13' 1" (4.0 m) 37,090 lbs. (16 820 kgf)
 in Auto Power-Up Mode .. 40,690 lbs. (18 460 kgf)
 - 15' 11" (4.85 m) 32,600 lbs. (14 790 kgf)
 in Auto Power-Up Mode .. 35,740 lbs. (16 210 kgf)
- Bucket Digging Force 55,530 lbs. (25 190 kgf)
 in Auto Power-Up Mode .. 60,700 lbs. (27 530 kgf)

*Digging force ratings are based on ISO 6015, "Earthmoving Machinery – Hydraulic Excavators – Tool Forces".

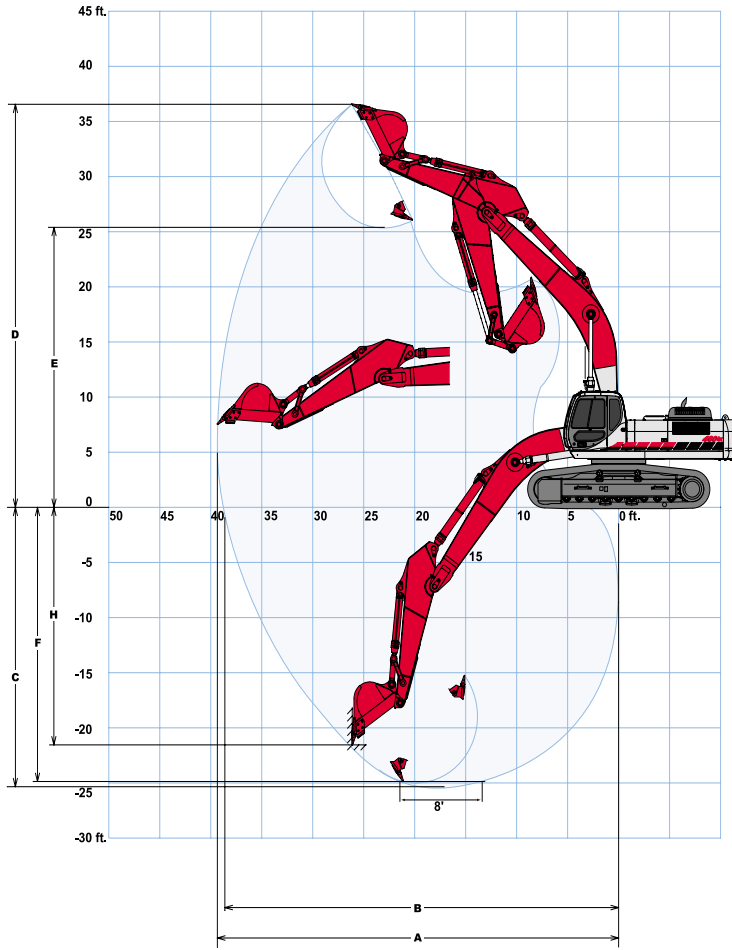
Operating Weight

Standard Excavator - Working weight with 35.4" (900 mm) shoes, 22' 11" (6.98 m) boom, 11' 1" (3.38 m) arm 3,200 lb. (1 450 kg) bucket, 18,000 lb. (8 166 kg) counterweight, and fixed lower weighing 40,560 lbs. (18 400 kg)
 101,200 lbs. (45 900 kg)

Excavator w/extendable sideframes- Working weight with 35.4" (900 mm) shoes, 22' 11" (6.98 m) boom, 11' 1" (3.38 m) arm 3,200 lb. (1 450 kg) bucket, 18,000 lb. (8 166 kg) counterweight, and expandable lower weighing 43,870 lbs. (19 900 kg)
 104,500 lbs. (47 400 kg)

Specifications (continued)

Working Ranges



460 LX w/fixed sideframes

Machine equipped with 22' 11" (6.98 m) boom.	8' 4" Arm (2.53 m)	11' 1" Arm (3.38 m)	13' 1" Arm (4.0 m)	15' 11" Arm (4.85 m)
A Max. digging radius	36' 10" (11.23 m)	39' 4" (12.0 m)	41' 2" (12.55 m)	44' 0" (13.4 m)
B Max. digging radius @ ground level	36' 1" (10.99 m)	38' 7" (11.77 m)	40' 5" (12.33 m)	43' 4" (13.20 m)
C Max. digging depth	22' 6" (6.87 m)	25' 4" (7.72 m)	27' 4" (8.34 m)	30' 2" (9.20 m)
D Max. digging height	35' 6" (10.82 m)	36' 7" (11.14 m)	37' 2" (11.34 m)	38' 11" (11.86 m)
E Max. dumping height	24' 4" (7.42 m)	25' 5" (7.74 m)	26' 1" (7.94 m)	27' 7" (8.42 m)
F Digging depth - 8' (2.44 m) level bottom	21' 11" (6.69 m)	24' 10" (7.58 m)	26' 11" (8.21 m)	29' 9" (9.08 m)
G Bucket wrist angle	176°	176°	176°	176°
H Max. vertical wall depth	18' 7" (5.67 m)	21' 7" (6.57 m)	23' 6" (7.16 m)	27' 0" (8.22 m)

460 LX w/extendable - retractable sideframes

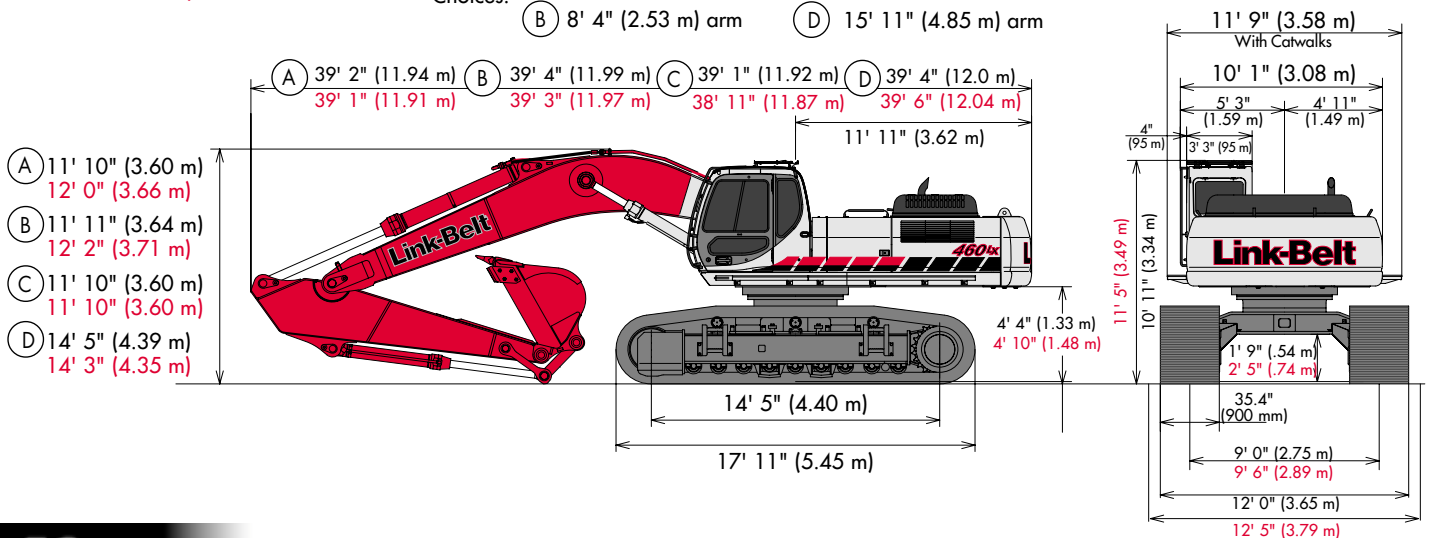
Machine equipped with 22' 11" (6.98 m) boom.	8' 4" Arm (2.53 m)	11' 1" Arm (3.38 m)	13' 1" Arm (4.0 m)	15' 11" Arm (4.85 m)
A Max. digging radius	36' 10" (11.23 m)	39' 4" (12.0 m)	41' 2" (12.55 m)	44' 0" (13.4 m)
B Max. digging radius @ ground level	35' 11" (10.95 m)	38' 6" (11.74 m)	40' 4" (12.30 m)	43' 3" (13.17 m)
C Max. digging depth	22' 1" (6.72 m)	24' 10" (7.57 m)	26' 10" (8.19 m)	29' 8" (9.04 m)
D Max. digging height	36' 0" (10.97 m)	37' 0" (11.29 m)	37' 8" (11.49 m)	39' 5" (12.01 m)
E Max. dumping height	24' 10" (7.57 m)	25' 11" (7.89 m)	26' 7" (8.09 m)	28' 1" (8.57 m)
F Digging depth - 8' (2.44 m) level bottom	21' 5" (6.54 m)	24' 5" (7.43 m)	26' 5" (8.06 m)	29' 4" (8.93 m)
G Bucket wrist angle	176°	176°	176°	176°
H Max. vertical wall depth	18' 1" (5.52 m)	21' 1" (6.42 m)	23' 0" (7.0 m)	26' 5" (8.06 m)

*Machine shown above equipped with fixed sideframes

Dimensions

Black Numbers: Fixed Sideframe
Red Numbers: Expandable Sideframe

Arm Choices: (A) 11' 1" (3.38 m) arm (C) 13' 1" (4.0 m) arm
(B) 8' 4" (2.53 m) arm (D) 15' 11" (4.85 m) arm



Lifting Capacities (460 LX w/fixed sideframes)

15' 11" (4.85 m) Arm w/fixed sideframes

22' 11" (6.98 m) Boom
and 2,780 lb.
(1 260 kg) Bucket.
Auto Power-Up Mode
Applied

Bucket Hook Height		Radius of Load															
		10' 0" (3.05m)		15' 0" (4.57 m)		20' 0" (6.10m)		25' 0" (7.62 m)		30' 0" (9.14m)		35' 0" (10.66 m)		Cap. at Max. Reach			
		End	Side	End	Side	End	Side	End	Side	End	Side	End	Side	End	Side		
+25' 0" (7.62 m)	lbs. kg														14,200* 6 440*	14,200* 6 440*	
+20' 0" (6.10 m)	lbs. kg									17,350* 7 860*	15,350* 6 960	12,200* 5 530*	11,300* 5 120			9,350* 4 240*	9,350* 4 240*
+15' 0" (4.57 m)	lbs. kg									18,950* 8 590*	14,750* 6 690	15,250* 6 910*	11,000* 4 980			8,950* 4 050*	8,950* 4 050*
+10' 0" (3.05 m)	lbs. kg					28,200* 12 790*	27,300* 12 380	23,550* 10 680*	19,050* 8 640	20,650* 9 360*	14,000* 6 350	17,800* 8 070*	10,550* 4 780			9,350* 4 240*	8,750* 3 960
+5' 0" (1.52 m)	lbs. kg	26,100* 11 830*	26,100* 11 830*	46,000* 20 860*	38,900* 17 640	33,100* 15 010*	25,100* 11 380	26,400* 11 970*	17,750* 8 050	22,350* 10 130*	13,250* 6 010	17,600* 7 980	10,100* 4 580			10,000* 4 530*	8,500* 3 850
Ground Line	lbs. kg	24,400* 11 060*	24,400* 11 060*	51,550* 23 380*	35,950* 16 300	36,750* 16 660*	23,350* 10 590	28,650* 12 990*	16,700* 7 570	21,950* 9 950	12,550* 5 690	17,150* 7 770	9,750* 4 420			11,000* 4 980*	8,500* 3 850
-5' 0" (1.52 m)	lbs. kg	30,150* 13 670*	30,150* 13 670*	53,300* 24 170*	34,550* 15 670	38,550* 17 480*	22,300* 10 110	28,450* 12 900	16,000* 7 250	21,450* 9 720	12,100* 5 480	16,900* 7 660	9,500* 4 300			12,600* 5 710*	8,900* 4 030
-10' 0" (3.05 m)	lbs. kg	38,900* 17 640*	38,900* 17 640*	51,950* 23 560*	34,100* 15 460	38,250* 17 350*	21,800* 9 880	28,050* 12 720	15,600* 7 070	21,200* 9 610	11,900* 5 390					15,100* 6 840*	9,750* 4 420
-15' 0" (4.57 m)	lbs. kg	50,450* 22 880*	50,450* 22 880*	47,650* 21 610*	34,400* 15 600	35,750* 16 210*	21,850* 9 910	27,750* 12 580*	15,650* 7 090	21,350* 9 680	12,000* 5 440					19,550* 8 860*	11,400* 5 170
-20' 0" (6.10 m)	lbs. kg	55,100* 24 990*	55,100* 24 990*	39,850* 18 070*	35,300* 16 010	30,150* 13 670*	22,400* 10 160	22,650* 10 270*	16,150* 7 320							20,000* 9 070*	14,700* 6 660
-25' 0" (7.62 m)	lbs. kg			26,250* 11 900*	26,250* 11 900*	18,650* 8 450*	18,650* 8 450*									18,250* 8 270*	18,250* 8 270*

13' 1" (4.0 m) Arm w/fixed sideframes

22' 11" (6.98 m) Boom
and 3,021 lb.
(1 370 kg) Bucket. Auto
Power-Up Mode
Applied

Bucket Hook Height		Radius of Load															
		10' 0" (3.05m)		15' 0" (4.57 m)		20' 0" (6.10m)		25' 0" (7.62 m)		30' 0" (9.14m)		35' 0" (10.66 m)		Cap. at Max. Reach			
		End	Side	End	Side	End	Side	End	Side	End	Side	End	Side	End	Side		
+25' 0" (7.62 m)	lbs. kg														16,700* 7 570*	16,700* 7 570*	
+20' 0" (6.10 m)	lbs. kg									18,700* 8 480*	15,000* 6 800					10,800* 4 890*	10,800* 4 890*
+15' 0" (4.57 m)	lbs. kg									23,200* 10 520*	19,800* 8 980	20,900* 9 480*	14,450* 6 550			11,050* 5 010*	10,900* 4 940
+10' 0" (3.05 m)	lbs. kg	31,150* 14 120*	31,150* 14 120*	42,900* 19 450*	41,300* 18 730	31,650* 14 350*	26,450* 11 990	25,850* 11 720*	18,650* 8 450	22,350* 10 130*	13,800* 6 250	14,000* 6 350*	10,500* 4 760			11,700* 5 300*	10,200* 4 620
+5' 0" (1.52 m)	lbs. kg	17,900* 8 110*	17,900* 8 110*	50,450* 22 880*	37,600* 17 050	35,900* 16 280*	24,550* 11 130	28,300* 12 830*	17,550* 7 960	22,550* 10 220	13,150* 5 960	15,400* 6 980*	10,150* 4 600			12,750* 5 780*	9,900* 4 490
Ground Line	lbs. kg	23,950* 10 860*	23,950* 10 860*	53,750* 24 380*	35,600* 16 140	38,550* 17 480*	23,200* 10 520	29,200* 13 240	16,700* 7 570	22,000* 9 970	12,650* 5 730					14,350* 6 500*	10,000* 4 530
-5' 0" (1.52 m)	lbs. kg	33,400* 15 150*	33,400* 15 150*	53,450* 24 240*	34,900* 15 830	39,200* 17 780*	22,500* 10 200	28,650* 12 990	16,200* 7 340	21,650* 9 820	12,350* 5 600					16,900* 7 660*	10,550* 4 780
-10' 0" (3.05 m)	lbs. kg	45,050* 20 430*	45,050* 20 430*	50,250* 22 790*	34,900* 15 830	37,700* 17 100*	22,300* 10 110	28,450* 12 900	16,050* 7 280	21,650* 9 820	12,300* 5 570					20,700* 9 380	11,800* 5 350
-15' 0" (4.57 m)	lbs. kg	59,750* 27 100*	59,750* 27 100*	44,050* 19 980*	35,550* 16 120	33,650* 15 260*	22,600* 10 250	25,900* 11 740*	16,300* 7 390							22,400* 10 160*	14,350* 6 500
-20' 0" (6.10 m)	lbs. kg	44,050* 19 980*	44,050* 19 980*	33,600* 15 240*	33,600* 15 240*	25,400* 11 520*	23,500* 10 650									21,700* 9 840*	20,100* 9 110

11' 1" (3.38 m) Arm w/fixed sideframes

22' 11" (6.98 m) Boom
and 3,198 lb.
(1 451 kg) Bucket. Auto
Power-Up Mode
Applied

Bucket Hook Height		Radius of Load															
		10' 0" (3.05m)		15' 0" (4.57 m)		20' 0" (6.10m)		25' 0" (7.62 m)		30' 0" (9.14m)		Cap. at Max. Reach					
		End	Side	End	Side	End	Side	End	Side	End	Side	End	Side				
+25' 0" (7.62 m)	lbs. kg														20,750* 9 410*	18,950* 8 590	
+20' 0" (6.10 m)	lbs. kg									22,500* 10 200*	20,150* 9 130	18,900* 8 570*	14,500* 6 570			13,950* 6 320*	13,300* 6 030
+15' 0" (4.57 m)	lbs. kg									29,000* 13 150*	27,600* 12 510	24,600* 11 150*	19,200* 8 700	21,950* 9 950*	14,000* 6 350	14,400* 6 530*	11,800* 5 350
+10' 0" (3.05 m)	lbs. kg					46,450* 21 060*	39,500* 17 910	33,500* 15 190*	25,600* 11 610	27,000* 12 240*	18,100* 8 210	22,900* 10 380	13,450* 6 100			15,300* 6 940*	10,950* 4 960
+5' 0" (1.52 m)	lbs. kg					52,450* 23 790*	36,350* 16 480	37,150* 16 850*	23,850* 10 810	29,100* 13 190*	17,150* 7 770	22,250* 10 090	12,900* 5 850			16,800* 7 620*	10,650* 4 830
Ground Line	lbs. kg					53,900* 24 440*	35,050* 15 890	39,000* 17 690*	22,750* 10 310	28,900* 13 100	16,400* 7 430	21,800* 9 880	12,450* 5 640			18,950* 8 590	10,800* 4 890
-5' 0" (1.52 m)	lbs. kg	35,300* 16 010*	35,300* 16 010*	52,050* 23 600*	34,750* 15 760	38,800* 17 590*	22,300* 10 110	28,450* 12 900	16,050* 7 280	21,600* 9 790	12,250* 5 550					20,300* 9 200	11,550* 5 230
-10' 0" (3.05 m)	lbs. kg	50,400* 22 860*	50,400* 22 860*	47,600* 21 590*	35,050* 15 890	36,300* 16 460*	22,300* 10 110	28,300* 12 830*	16,050* 7 280							23,150* 10 500	13,200* 5 980
-15' 0" (4.57 m)	lbs. kg	52,300* 23 720*	52,300* 23 720*	40,000* 18 140*	35,900* 16 280	30,900* 14 010*	22,850* 10 360									23,150* 10 500*	16,600* 7 520
-20' 0" (6.10 m)	lbs. kg					27,150* 12 310*	27,150* 12 310*									21,050* 9 540*	21,050* 9 540*

8' 4" (2.53 m) Arm w/fixed sideframes
 22' 11" (6.98 m) Boom and 3,353 lb. (1 521 kg) Bucket. Auto Power-Up Mode Applied

Bucket Hook Height		Radius of Load												Cap. at Max. Reach		
		10' 0" (3.05 m)		15' 0" (4.57 m)		20' 0" (6.10 m)		25' 0" (7.62 m)		30' 0" (9.14 m)						
		End	Side	End	Side	End	Side	End	Side	End	Side					
+25' 0" (7.62 m)	lbs. kg														23,950* 10 860*	22,250 10 090
+20' 0" (6.10 m)	lbs. kg									24,300* 11 020*	19,150 8 680				20,550* 9 320*	15,100 6 840
+15' 0" (4.57 m)	lbs. kg			41,950* 19 020*	40,850 18 520	31,300* 14 190*	26,100 11 830	26,000* 11 790*	18,250 8 270	22,750* 10 310*	13,250 6 010				21,400* 9 700*	13,150 5 960
+10' 0" (3.05 m)	lbs. kg			50,150* 22 740*	36,350 16 480	35,200* 15 960*	24,050 10 900	28,000* 12 700*	17,200 7 800	22,200* 10 060	12,750 5 780				21,000* 9 520	12,050 5 460
+5' 0" (1.52 m)	lbs. kg			41,200* 18 680*	34,250 15 530	37,850* 17 160*	22,550 10 220	28,800* 13 060	16,300 7 390	21,700* 9 840	12,300 5 570				20,600* 9 340	11,700 5 300
Ground Line	lbs. kg			51,600* 23 400*	33,800 15 330	38,450* 17 440*	21,800 9 880	28,200* 12 790	15,750 7 140	21,400* 9 700	12,050 5 460				21,200* 9 610	11,950 5 420
-5' 0" (1.52 m)	lbs. kg			48,000* 21 770*	34,000 15 420	36,950* 16 760*	21,600 9 790	28,000* 12 700	15,600 7 070						23,150* 10 500	13,000 5 890
-10' 0" (3.05 m)	lbs. kg	51,500* 23 360*	51,500* 23 360*	42,050* 19 070*	34,700 15 730	33,050* 14 990*	22,000 9 970	25,400* 11 520*	15,900 7 210						24,500* 11 110*	15,450 7 000
-15' 0" (4.57 m)	lbs. kg			32,450* 14 710*	32,450* 14 710*	25,200* 11 430*	23,000 10 430								23,250* 10 540*	21,150 9 590

Lifting Capacities (460 LX w/extendable - retractable sideframes) (extended)

15' 11" (4.85 m) Arm w/sideframes extended

22' 11" (6.98 m) Boom and 2,780 lb. (1 260 kg) Bucket. Auto Power-Up Mode Applied

Bucket Hook Height		Radius of Load												Cap. at Max. Reach		
		10' 0" (3.05 m)		15' 0" (4.57 m)		20' 0" (6.10 m)		25' 0" (7.62 m)		30' 0" (9.14 m)		35' 0" (10.66 m)				
		End	Side	End	Side	End	Side	End	Side	End	Side	End	Side			
+25' 0" (7.62 m)	lbs. kg														13,750* 6 230*	13,750* 6 230*
+20' 0" (6.10 m)	lbs. kg									17,600* 7 980*	16,650 7 550	12,550* 5 690*	12,350 5 600		8,900* 4 030*	8,900* 4 030*
+15' 0" (4.57 m)	lbs. kg									19,100* 8 660*	16,000 7 250	15,500* 7 030*	12,050 5 460		9,000* 4 080*	9,000* 4 080*
+10' 0" (3.05 m)	lbs. kg	60,200* 27 300*	60,200* 27 300*			28,750* 13 040*	28,750* 13 040*	23,850* 10 810*	20,600 9 340	20,800* 9 430*	15,250 6 910	18,050* 8 180*	11,600 5 260		9,400* 4 260*	9,400* 4 260*
+5' 0" (1.52 m)	lbs. kg	25,150* 11 400*	25,150* 11 400*	46,750* 21 200*	42,400 19 230	33,550* 15 210*	27,250 12 360	26,650* 12 080*	19,350 8 770	22,500* 10 200*	14,450 6 550	18,200 8 250	11,150 5 050		10,100* 4 580*	9,400 4 260
Ground Line	lbs. kg	24,800* 11 240*	24,800* 11 240*	51,900* 23 540*	39,600 17 960	37,000* 16 780*	25,550 11 580	28,850* 13 080*	18,300 8 300	22,650 10 270	13,800 6 250	17,800 8 070	10,750 4 870		11,150* 5 050*	9,500 4 300
-5' 0" (1.52 m)	lbs. kg	30,900* 14 010*	30,900* 14 010*	53,300* 24 170*	38,250 17 350	38,600* 17 500*	24,550 11 130	29,400* 13 330	17,600 7 980	22,200 10 060	13,350 6 050	17,550 7 960	10,550 4 780		12,800* 5 800*	10,000 4 530
-10' 0" (3.05 m)	lbs. kg	39,900* 18 090*	39,900* 18 090*	51,650* 23 420*	37,900 17 190	38,150* 17 300*	24,100 10 930	29,000* 13 150	17,250 7 820	21,950 9 950	13,200 5 980				15,400* 6 980*	11,000 4 980
-15' 0" (4.57 m)	lbs. kg	51,800* 23 490*	51,800* 23 490*	47,050* 21 340*	38,250 17 350	35,350* 16 030*	24,200 10 970	27,450* 12 450*	17,350 7 860	21,100* 9 570*	13,350 6 050				20,100* 9 110*	12,900 5 850
-20' 0" (6.10 m)	lbs. kg	53,500* 24 260*	53,500* 24 260*	38,800* 17 590*	38,800* 17 590*	29,350* 13 310*	24,850 11 270	21,850* 9 910*	17,900 8 110						19,950* 9 040*	16,800 7 620
-25' 0" (7.62 m)	lbs. kg			24,450* 11 090*	24,450* 11 090*										17,850* 8 090*	17,850* 8 090*

13' 1" (4.0 m) Arm w/sideframes extended

22' 11" (6.98 m) Boom and 3,021 lb. (1 370 kg) Bucket. Auto Power-Up Mode Applied

Bucket Hook Height		Radius of Load												Cap. at Max. Reach		
		10' 0" (3.05 m)		15' 0" (4.57 m)		20' 0" (6.10 m)		25' 0" (7.62 m)		30' 0" (9.14 m)		35' 0" (10.66 m)				
		End	Side	End	Side	End	Side	End	Side	End	Side	End	Side			
+25' 0" (7.62 m)	lbs. kg														16,150* 7 320*	16,150* 7 320*
+20' 0" (6.10 m)	lbs. kg									19,150* 8 680*	16,250 7 370				10,800* 4 890*	10,800* 4 890*
+15' 0" (4.57 m)	lbs. kg							23,450* 10 630*	21,400 9 700	21,050* 9 540*	15,700 7 120				11,100* 5 030*	11,100* 5 030*
+10' 0" (3.05 m)	lbs. kg	27,100* 12 290*	27,100* 12 290*	43,800* 19 860*	43,800* 19 860*	32,100* 14 560*	28,600 12 970	26,100* 11 830*	20,200 9 160	22,500* 10 200*	15,050 6 820	14,250* 6 460*	11,500 5 210		11,800* 5 350*	11,200 5 080
+5' 0" (1.52 m)	lbs. kg	18,150* 8 230*	18,150* 8 230*	51,000* 23 130*	41,150 18 660	36,250* 16 440*	26,700 12 110	28,550* 12 950*	19,150 8 680	23,300* 10 560	14,400 6 530	15,350* 6 960*	11,200 5 080		12,850* 5 820*	10,900 4 940
Ground Line	lbs. kg	24,800* 11 240*	24,800* 11 240*	53,900* 24 440*	39,300 17 820	38,700* 17 550*	25,400 11 520	30,150* 13 670*	18,300 8 300	22,750 10 310	13,900 6 300				14,550* 6 590*	11,100 5 030
-5' 0" (1.52 m)	lbs. kg	34,450* 15 620*	34,450* 15 620*	53,250* 24 150*	38,650 17 530	39,150* 17 750*	24,750 11 220	29,600* 13 420	17,800 8 070	22,450 10 180	13,600 6 160				17,250* 7 820*	11,800 5 350
-10' 0" (3.05 m)	lbs. kg	46,300* 21 000*	46,300* 21 000*	49,800* 22 580*	38,750 17 570	37,450* 16 980*	24,650 11 180	29,200* 13 240*	17,700 8 020	22,450 10 180	13,650 6 190				21,800* 9 880*	13,250 6 010
-15' 0" (4.57 m)	lbs. kg	58,950* 26 730*	58,950* 26 730*	43,250* 19 610*	39,450 17 890	33,050* 14 990*	25,000 11 330	25,350* 11 490*	18,000 8 160						22,350* 10 130*	16,200 7 340
-20' 0" (6.10 m)	lbs. kg	42,000* 19 050*	42,000* 19 050*	32,200* 14 600*	32,200* 14 600*	24,200* 10 970*	24,200* 10 970*								21,500* 9 750*	21,500* 9 750*



Lifting Capacities (460 LX w/extendable - retractable sideframes) (extended)

11' 1" (3.38 m) Arm w/sideframes extended

22' 11" (6.98 m) Boom and 3,198 lb. (1 451 kg) Bucket.
Auto Power-Up Mode Applied

Bucket Hook Height		Radius of Load													
		10' 0" (3.05 m)		15' 0" (4.57 m)		20' 0" (6.10 m)		25' 0" (7.62 m)		30' 0" (9.14 m)		Cap. at Max. Reach			
		End	Side	End	Side	End	Side	End	Side	End	Side	End	Side		
+25' 0" (7.62 m)	lbs. kg													20,150* 9 130*	19,650 8 910
+20' 0" (6.10 m)	lbs. kg							22,650* 10 270*	21,800 9 880	19,600* 8 890*	15,750 7 140			13,950* 6 320*	13,950* 6 320*
+15' 0" (4.57 m)	lbs. kg					29,450* 13 350*	29,450* 13 350*	24,800* 11 240*	20,800 9 430	22,050* 10 000*	15,300 6 940			14,450* 6 550*	12,850 5 820
+10' 0" (3.05 m)	lbs. kg			47,250* 21 430*	43,000 19 500	33,900* 15 370*	27,750 12 580	27,250* 12 360*	19,700 8 930	23,300* 10 560*	14,700 6 660			15,400* 6 980*	12,050 5 460
+5' 0" (1.52 m)	lbs. kg			52,800* 23 940*	40,000 18 140	37,450* 16 980*	26,050 11 810	29,300* 13 290*	18,700 8 480	23,000 10 430	14,150 6 410			17,000* 7 710*	11,750 5 320
Ground Line	lbs. kg			53,850* 24 420*	38,750 17 570	39,100* 17 730*	25,000 11 330	29,850 13 530	18,050 8 180	22,550 10 220	13,750 6 230			19,500* 8 840*	12,000 5 440
-5' 0" (1.52 m)	lbs. kg	36,700* 16 640*	36,700* 16 640*	51,750* 23 470*	38,550 17 480	38,650* 17 530*	24,600 11 150	29,450* 13 350	17,700 8 020	22,350 10 130	13,550 6 140			21,250 9 630	12,900 5 850
-10' 0" (3.05 m)	lbs. kg	52,050* 23 600*	52,050* 23 600*	47,000* 21 310*	38,900 17 640	35,950* 16 300*	24,650 11 180	27,950* 12 670*	17,750 8 050					23,250* 10 540*	14,800 6 710
-15' 0" (4.57 m)	lbs. kg	50,800* 23 040*	50,800* 23 040*	39,050* 17 710*	39,050* 17 710*	30,150* 13 670*	25,250 11 450							23,050* 10 450*	18,850 8 550
-20' 0" (6.10 m)	lbs. kg			25,400* 11 520*	25,400* 11 520*									20,500* 9 290*	20,500* 9 290*

8' 4" (2.53 m) Arm w/sideframes extended

22' 11" (6.98 m) Boom and 3,353 lb. (1 521 kg) Bucket.
Auto Power-Up Mode Applied

Bucket Hook Height		Radius of Load													
		10' 0" (3.05 m)		15' 0" (4.57 m)		20' 0" (6.10 m)		25' 0" (7.62 m)		30' 0" (9.14 m)		Cap. at Max. Reach			
		End	Side	End	Side	End	Side	End	Side	End	Side	End	Side		
+25' 0" (7.62 m)	lbs. kg													23,800* 10 790*	22,900 10 380
+20' 0" (6.10 m)	lbs. kg					27,900* 12 650*	27,900* 12 650*	24,450* 11 090*	20,800 9 430					20,600* 9 340*	16,250 7 370
+15' 0" (4.57 m)	lbs. kg			42,850* 19 430*	42,850* 19 430*	31,700* 14 370*	28,250 12 810	26,200* 11 880*	19,800 8 980	23,100* 10 470*	14,550 6 590			21,550* 9 770*	14,300 6 480
+10' 0" (3.05 m)	lbs. kg			50,700* 22 990*	39,850 18 070	35,500* 16 100*	26,250 11 900	28,150* 12 760*	18,750 8 500	22,900 10 380	14,050 6 370			21,700 9 840	13,250 6 010
+5' 0" (1.52 m)	lbs. kg			41,550* 18 840*	37,900 17 190	38,000* 17 230*	24,800 11 240	29,600* 13 420*	17,900 8 110	22,450 10 180	13,600 6 160			21,400 9 700	12,950 5 870
Ground Line	lbs. kg			51,350* 23 290*	37,600 17 050	38,400* 17 410*	24,050 10 900	29,150 13 220	17,350 7 860	22,150 10 040	13,350 6 050			22,150 10 040	13,300 6 030
-5' 0" (1.52 m)	lbs. kg			47,550* 21 560*	37,850 17 160	36,700* 16 640*	23,950 10 860	28,750* 13 040*	17,250 7 820					24,300 11 020	14,600 6 620
-10' 0" (3.05 m)	lbs. kg	50,550* 22 920*	50,550* 22 920*	41,300* 18 730*	38,600 17 500	32,500* 14 740*	24,350 11 040	24,850* 11 270*	17,650 8 000					24,450* 11 090*	17,450 7 910
-15' 0" (4.57 m)	lbs. kg			31,200* 14 150*	31,200* 14 150*	24,050* 10 900*	24,050* 10 900*							22,950* 10 410*	22,950* 10 410*

Notes: Excavator lifting capacities

- Lifting capacities shown should not be exceeded. Weight of all lifting accessories must be deducted from the above lifting capacities.
- Lifting capacities are based on machine standing on firm, uniform supporting surface. User must make allowances for job conditions such as soft or uneven ground.
- Lifting capacities shown do not exceed 75% of minimum tipping loads or 87% of hydraulic capacities. Capacities marked with an asterisk (*) are limited by hydraulic capacities.
- Least stable position is over the side.
- Operator should be fully acquainted with the Operator's Manual & Operating Safety Booklet, furnished by LBX before operating the machine.
- Capacities apply only to the machine as originally manufactured and normally equipped by LBX Company, LLC.
- Lift capacity ratings are based on SAE J/ISO 10567, "Earthmoving Machinery - Hydraulic Excavators - Lift Capacity".
- Lifting or digging operations with the sideframes in the retracted positions are not permitted.

Specifications (continued)

Bucket Sizes

460 LX w/fixed side frames

Bucket Type	Capacity	Width Outside Lip	Weight	# Teeth	Arm	Arm	Arm	Arm
					8' 4" (2.53 m)	11' 1" (3.38 m)	13' 1" (4.0 m)	15' 11" (4.85 m)
ESCO STD	1.76 cu. yd. (1.35 m ³)	36" (914 mm)	2,906 lb. (1 318 kg)	4	H	H	H	H
	2.14 cu. yd. (1.64 m ³)	42" (1 067 mm)	3,206 lb. (1 454 kg)	5	H	H	H	M
	2.52 cu. yd. (1.93 m ³)	48" (1 219 mm)	3,405 lb. (1 545 kg)	5	H	M	M	L
	2.91 cu. yd. (2.22 m ³)	54" (1 372 mm)	3,705 lb. (1 681 kg)	6	H	M	L	L
	3.29 cu. yd. (2.52 m ³)	60" (1 524 mm)	3,903 lb. (1 770 kg)	6	M	L	L	N/A
	4.05 cu. yd. (3.10 m ³)	66" (1 676 mm)	4,698 lb. (2 131 kg)	7	L	N/A	N/A	N/A
ESCO HDP	1.73 cu. yd. (1.32 m ³)	36" (914 mm)	3,507 lb. (1 591 kg)	4	H	H	H	H
	2.10 cu. yd. (1.61 m ³)	42" (1 067 mm)	3,848 lb. (1 745 kg)	5	H	H	H	M
	2.48 cu. yd. (1.90 m ³)	48" (1 219 mm)	4,108 lb. (1 863 kg)	5	H	M	M	L
	2.85 cu. yd. (2.18 m ³)	54" (1 372 mm)	4,448 lb. (2 018 kg)	6	M	L	L	N/A
	3.24 cu. yd. (2.48 m ³)	60" (1 524 mm)	4,707 lb. (2 135 kg)	6	M	L	L	N/A
ESCO XDP	1.58 cu. yd. (1.21 m ³)	36" (914 mm)	4,218 lb. (1 913 kg)	4	H	H	H	H
	1.93 cu. yd. (1.48 m ³)	42" (1 067 mm)	4,537 lb. (2 058 kg)	4	H	H	H	M
	2.28 cu. yd. (1.74 m ³)	48" (1 219 mm)	4,961 lb. (2 250 kg)	5	H	M	M	L
ESCO HDC	1.90 cu. yd. (1.45 m ³)	39" (991 mm)	3,264 lb. (1 481 kg)	5	H	H	H	M
	2.27 cu. yd. (1.74 m ³)	45" (1 143 mm)	3,498 lb. (1 587 kg)	5	H	H	M	L

460 LX w/extendable - retractable side frames (extended)

Arm	Arm	Arm	Arm
8' 4" (2.53 m)	11' 1" (3.38 m)	13' 1" (4.0 m)	15' 11" (4.85 m)
H	H	H	H
H	H	H	M
H	H	H	L
H	M	M	L
M	M	L	N/A
L	L	N/A	N/A
H	H	H	H
H	H	H	M
H	H	M	L
H	M	M	L
M	L	L	N/A
H	H	H	H
H	H	H	M
H	H	M	L
H	H	H	H
H	H	H	M

Approval Code For Arm/Bucket Combinations:
 H Heavy material (up to 3,370 lbs./cu. yd.)
 L Light material (up to 2,020 lbs./cu. yd.)
 M Medium material (up to 2,700 lbs./cu. yd.)
 N/A Not applicable

Standard Equipment

- Inte-LX® Computer System
- Self-diagnostic system
- Five selectable working modes
- One-touch decelerator
- Auto idling system
- Auto idle start
- Low idle up
- Auto engine warm up
- Auto power-up mode
- Integral cylinder cushioning
- Cushioned attachment control
- Boom and arm holding valves
- Free swing control
- Auto power swing
- Single Pedal Travel
- Travel Alarm
- Nephron® filtration system
- Low noise/low vibration cab floating on 6 fluid filled mounts
- Sliding/reclining, suspension cloth upholstered seat with adjustable arm rests and lumbar support, retracting seat belt
- 3-position tilting consoles
- 4th position on left console for entering and exiting the cab also serves as control lock-out
- Illuminated LCD service monitor
- Climate control heater and air conditioner
- Hand grab rails both sides
- Rear view mirror, coat hook, storage compartment
- Horn, interior lighting, AM/FM STEREO radio, digital clock, floor mat, cigarette lighter
- Safety glass front windows with automatic lock and intermittent rise-up windshield wiper and washer, large LEXAN® rear/side windows
- Gate lock and gate lock lever (control lock-out device)
- Vandalism locks/guarding
- Common key for cab & house doors, engine hood, tool box, and fuel cap
- Sealed and Lubricated track
- Control pattern selector valve
- 12 volt accessory outlet for cell phones/audio extras
- Upper and lower undercovers
- LC undercarriage
- Chrome plated boom foot pin with oil impregnated bushing
- Chrome plated boom to arm connection pin with oil impregnated bushing
- 18,000 lbs. (8 166 kg) counterweight
- Catwalks (both sides)

Options

- Arms
 - 8' 4" (2.53 m)
 - 11' 1" (3.38m)
 - 13' 1" (4.0 m) arm
 - 15' 11" (4.85 m) arm
- Track
 - 29.5" (750 mm) 3-Bar Grouser
- Counterweight Removal System (Hydraulically Controlled)
- Auxiliary Hydraulics
 - Single Acting
 - Multi-Function
 - Thumb
- Hose Burst Check Valves
- Couplers (field install)
 - Hendrix Hydraulic Coupler
 - Esco Multi-Pin Grabber
- Thumbs (field install)
 - Esco Universal rigid
 - Esco Hydraulic non-link
 - Esco Hydraulic non-link (for coupler)
 - Esco Hydraulic link