

Quantum
SERIES EXCAVATORS®

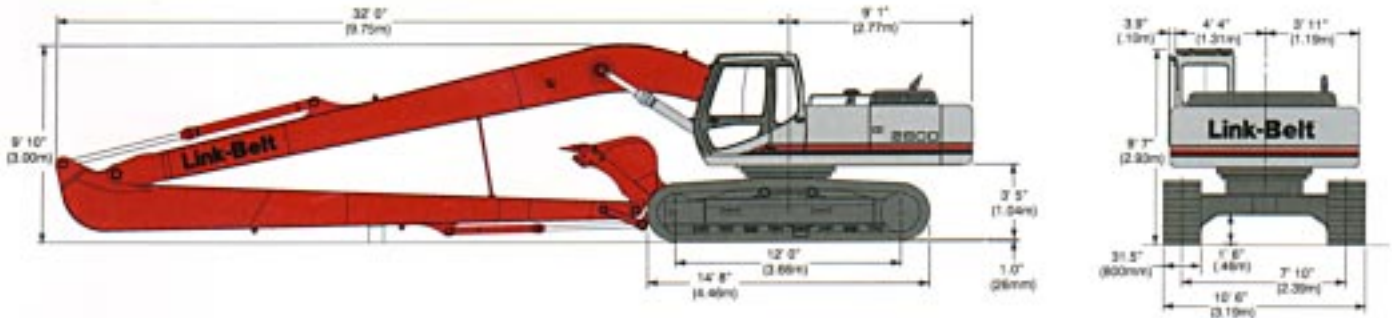
2800
LONG FRONT
SPECIFICATIONS

47,190 lbs. (21 400 kg) Operating Weight

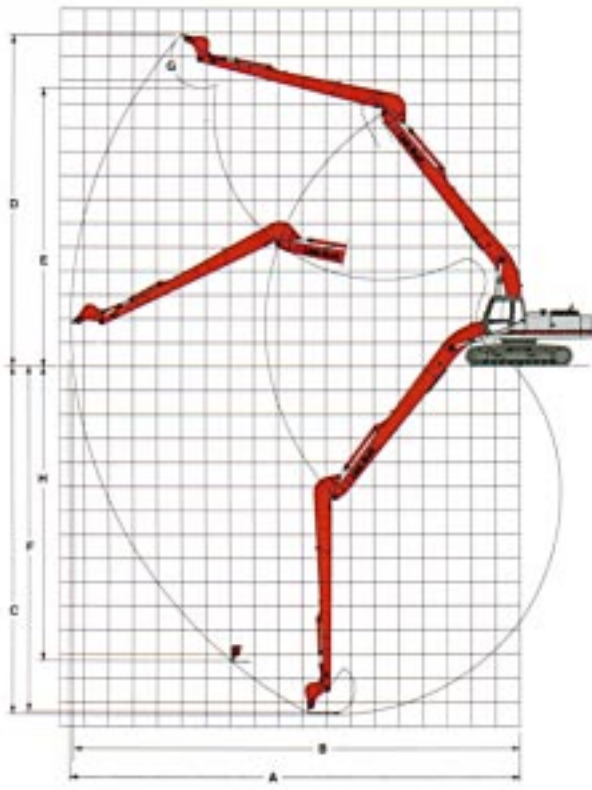


Link-Belt
EXCAVATORS
SCRAPMASTER | LOGMASTER

DIMENSIONS



WORKING RANGES



	21' 0" Arm 6.40 m
A Max. digging radius	51' 2" 15.60 m
B Max. digging radius @ ground level	50' 10" 15.49 m
C Max. digging depth	39' 4" 11.99 m
D Max. digging height	41' 6" 12.66 m
E Max. dumping height	34' 3" 10.45 m
F Digging depth – 8' (2.44 m) level bottom	39' 0" 11.88 m
G Bucket wrist angle	180°
H Max. vertical wall depth	33' 2" 10.12 m

BUCKETS

Bucket Type	Capacity	Width Outside Lip	Weight
ESCO STDP	.48 cu. yd. (.37 m ³)	24" (610 mm)	818 lb. (371 kg)
ESCO DITCH CLEANING	.75 cu. yd. (.57 m ³) .75 cu. yd. (.57 m ³)	60" (1 524 mm)* 54" (1 372 mm)**	983 lb. (446 kg) 924 lb. (419 kg)

* Bucket must be removed for travel position.

** Bucket fits between 31.5" (800 mm) tracks in travel position.

2800 QUANTUM LONG FRONT LIFTING CAPACITIES

21' 0" (6.40 m) ARM EQUIPPED WITH 772 LB. (350 KG) BUCKET POWER UP MODE APPLIED

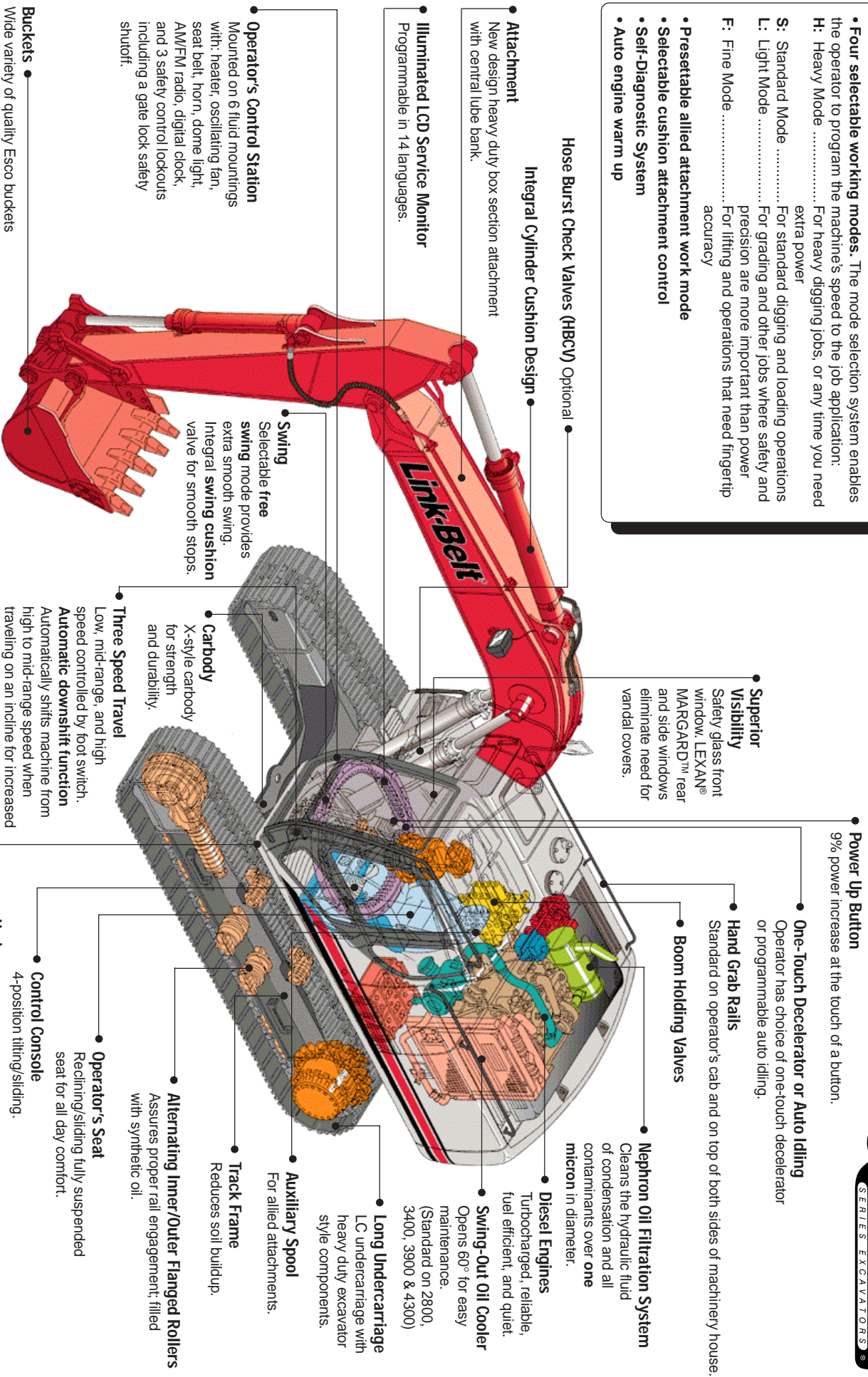
Bucket Hook Height		Radius of Load																	
		10' 0" (3.05m)		15' 0" (4.57m)		20' 0" (6.10m)		25' 0" (7.62m)		30' 0" (9.14m)		35' 0" (10.67m)		40' 0" (12.19m)		45' 0" (13.72m)		Capacity at Max. Reach	
		End	Side	End	Side	End	Side	End	Side	End	Side	End	Side	End	Side	End	Side	End	Side
+30' 0" (9.14 m)	lbs. kg													3,750* 1 701*	3,750 1 701			2,200* 998*	2,200* 998*
+25' 0" (7.62 m)	lbs. kg													4,150* 1 882*	3,700 1 678			2,150* 975*	2,150* 975*
+20' 0" (6.10 m)	lbs. kg											4,350* 1 973*	4,350* 1 973*	4,300* 1 950*	3,600 1 633	3,800* 1 724*	2,650 1 202	2,150* 975*	2,150 975
+15' 0" (4.57 m)	lbs. kg											4,800* 2 177*	4,600 2 087	4,600* 2 087*	3,450 1 565	4,350 1 973	2,550 1 157	2,200* 998*	1,950 885
+10' 0" (3.05 m)	lbs. kg							6,600* 2 994*	6,600* 2 994*	5,900* 2 676*	5,700 2 586	5,300* 2 404*	4,250 1 928	4,950* 2 245*	3,250 1 474	4,200 1 905	2,450 1 111	2,300* 1 043*	1,800 816
+5' 0" (1.52 m)	lbs. kg	8,250* 3 742*	8,250* 3 742*	14,450* 6 555*	14,450* 6 555*	10,250* 4 649*	9,800 4 445	7,950* 3 606*	6,950 3 153	6,650* 3 016*	5,200 2 359	5,900* 2 676*	3,950 1 792	5,100 2 313	3,000 1 361	4,100 1 860	2,300 1 043	2,450* 1 111*	1,700 771
Ground Line	lbs. kg	5,700* 2 586*	5,700* 2 586*	14,150* 6 418*	12,750 5 783	12,050* 5 466*	8,600 3 901	9,250* 4 196*	6,250 2 835	7,500* 3 402*	4,700 2 132	6,100 2 767	3,600 1 633	4,850 2 200	2,800 1 270	3,950 1 792	2,150 975	2,650* 1 202*	1,700 771
-5' 0" (1.52 m)	lbs. kg	6,300* 2 858*	6,300* 2 858*	11,300* 5 126*	11,300* 5 126*	13,400* 6 078*	7,800 3 538	9,700 4 400	5,700 2 586	7,400 3 357	4,350 1 973	5,800 2 631	3,350 1 520	4,700 2 132	2,600 1 179	3,800 1 724	2,050 930	2,900* 1 315*	1,750 794
-10' 0" (3.05 m)	lbs. kg	7,300* 3 311*	7,300* 3 311*	11,450* 5 194*	11,100 5 035	13,000 5 897	7,400 3 357	9,300 4 218	5,350 2 427	7,100 3 221	4,050 1 837	5,600 2 540	3,150 1 429	4,550 2 064	2,500 1 134	3,750 1 701	2,000 907	3,250* 1 474*	1,850 839
-15' 0" (4.57 m)	lbs. kg	8,800* 3 992*	8,800* 3 992*	12,650* 5 738*	11,250 5 103	12,800 5 806	7,250 3 289	9,100 4 128	5,200 2 359	6,950 3 153	3,900 1 769	5,500 2 495	3,050 1 383	4,500 2 041	2,450 1 111			3,800* 1 724*	2,050 930
-20' 0" (6.10 m)	lbs. kg	10,400* 4 717*	10,400* 4 717*	14,550* 6 600*	11,450 5 194	12,850 5 829	7,300 3 311	9,100 4 128	5,200 2 359	6,900 3 130	3,900 1 769	5,500 2 495	3,050 1 383	4,500 2 041	2,450 1 111			4,350 1 973	2,400 1 089
-25' 0" (7.62 m)	lbs. kg	12,850* 5 829*	12,850* 5 829*	17,500* 7 938*	11,750 5 330	13,050 5 919	7,500 3 402	9,250 4 196	5,300 2 404	7,000 3 175	4,000 1 814	5,600 2 540	3,150 1 429					3,900* 1 769*	3,000 1 361
-30' 0" (9.14 m)	lbs. kg	15,700* 7 122*	15,700* 7 122*	16,500* 7 484*	12,350 5 602	12,550* 5 693*	7,900 3 583	9,550 4 332	5,600 2 540	7,300 3 311	4,250 1 928								

Notes: Excavator lifting capacities

- Lifting capacities shown should not be exceeded. Weight of all lifting accessories must be deducted from the above lifting capacities.
- Lifting capacities are based on machine standing on firm, uniform supporting surface. User must make allowances for job conditions such as soft or uneven ground.
- Lifting capacities shown do not exceed 75% of minimum tipping loads or 87% of hydraulic capacities. Capacities marked with an asterisk (*) are limited by hydraulic capacities.
- These capacities apply to machines having 4,980 psi (350 kg/cm²) boomhoist cylinder pressure.
- Least stable position is over the side.
- Lifting capacities are in compliance with SAE J1097. Operator should be fully acquainted with the Operator's Manual & Operating Safety Booklet, furnished by manufacturer before operating the machine.
- Capacities apply only to the machine as originally manufactured and normally equipped by Link-Belt Construction Equipment Company.

Intelligent Quantum (IQ) Control "The Smart System"

- **Four selectable working modes.** The mode selection system enables the operator to program the machine's speed to the job application:
 - H:** Heavy Mode For heavy digging jobs, or any time you need extra power
 - S:** Standard Mode For standard digging and loading operations
 - L:** Light Mode For grading and other jobs where safety and precision are more important than power
 - F:** Fine Mode For lifting and operations that need fingertip accuracy
- **Presetable allied attachment work mode**
- **Selectable cushion attachment control**
- **Self-Diagnostic System**
- **Auto engine warm up**



Power Up Button
9% power increase at the touch of a button.

One-Touch Decelerator or Auto Idling
Operator has choice of one-touch decelerator or programmable auto idling.

Hand Grab Rails
Standard on operator's cab and on top of both sides of machinery house.

Boom Holding Valves

Nephron Oil Filtration System
Cleans the hydraulic fluid of condensates and all contaminants over one micron in diameter.

Diesel Engines
Turbocharged, reliable, fuel efficient, and quiet.

Swing-Out Oil Cooler
Opens 60° for easy maintenance.
(Standard on 2800, 3400, 3900 & 4300)

Long Undercarriage
LC undercarriage with heavy duty excavator style components.

Auxiliary Spool
For allied attachments.

Track Frame
Reduces soil buildup.

Alternating Inner/Outer Flanged Rollers
Assures proper rail engagement, filled with synthetic oil.

Operator's Seat
Reclining/sliding fully suspended seat for all day comfort.

Control Console
4-position tilting/sliding.

Undercovers
Fully covered upper and lower.

Superior Visibility
Safety glass front window, LEXAN® MARGARD™ rear and side windows eliminate need for vandal covers.

Hose Burst Check Valves (HBCV) Optional

Attachment
New design heavy duty box section attachment with central lube bank.

Illuminated LCD Service Monitor
Programmable in 14 languages.

Operator's Control Station
Mounted on 6 fluid mountings with: heater, oscillating fan, seat belt, horn, dome light, AM/FM radio, digital clock, and 3 safety control lockouts including a gate lock safety shutoff.

Swing
Selectable free swing mode provides extra smooth swing. Integral swing cushion valve for smooth stops.

Buckets
Wide variety of quality Escoc buckets with Super V tooth system.

Three Speed Travel
Low, mid-range, and high speed controlled by foot switch.
Automatic downshift function
Automatically shifts machine from high to mid-range speed when traveling on an incline for increased tractive effort.
Single pedal travel Standard on 3400, 3900, 4300 and 5800.

