

**Link-Belt**  
EARTHMOVING • FORESTRY  
MATERIAL HANDLING EQUIPMENT

# 240<sup>Lx</sup> Timber Loader

Operating Weight: 74,800 lbs (33 926 kg)

SAE Net Horsepower: 162 HP (121 kW)



# Specifications

## Engine

Isuzu BB-6BG1T Electric engine control, turbocharged, water cooled, 4-cycle diesel, 6 cylinder, 396 CID (6 494 cc), 4.13" (105 mm) bore x 4.92" (125 mm) stroke. EPA Tier II compliant.

SAE net horsepower .. 162 HP (121 kW) @ 2,150 rpm  
Maximum torque . 415 ft.-lbs. (562 N-m) @ 1,800 rpm  
Starter ..... Electric, 24V  
Alternator ..... 40 amp  
Battery Cold Cranking ..... 780 amp  
Air cleaner ..... Double element  
Governor ..... Electrical  
Avg. Fuel Usage ..... 4.37 gph (16.54 l/hr)

## Hydraulic System

Two variable displacement axial piston pumps, one pump for grapple rotate, and one gear pump for pilot controls, with Link-Belt Inte-LX Control System. Link-Belt Inte-LX Control includes: electric engine control, five selectable working modes, auto/one touch idling, automatic speed shifting, free swing, cushioned attachment, swing anti-braking system, and two safety lockout switches including gate lock.

### Hydraulic Pumps

Two variable volume piston pumps provide power for attachment, swing and travel.

Maximum flow ..... 2 x 56.0 gpm (2 x 212 l/min)  
Pilot pump max. flow ..... 5.8 gpm (22 l/min)  
Aux. pump max. flow ..... 7.9 gpm (30 l/min)

### Relief Valve Settings

Boom/arm/bucket ..... 4,970 psi (350 kg/cm<sup>2</sup>)  
Swing circuit ..... 4,190 psi (295 kg/cm<sup>2</sup>)  
Travel ..... 4,970 psi (350 kg/cm<sup>2</sup>)

**Hydraulic Cylinders** – Pierce attachment cylinders – bore x rod x stroke.

Boom .... (2) 6.0" x 3.75" x 46.0" (152mm x 95mm x 1 165mm)

Arm .... 7.0" x 5.0" x 55.38" (178mm x 127mm x 1 407mm)

Heel ..... 5.5" x 4.0" x 39.75" (140mm x 1 010 mm x mm)

### Oil Filtration

Nephron filter ..... 1 micron  
Return, pilot ..... 10 micron  
Suction filter ..... 105 micron

**Control Valve** One 4-spool valve and one 5-spool valve with auxiliary spool.

## Cab and Controls

Cab mounted on 6 fluid filled mountings. Features include a safety glass front window and LEXAN® MARGARD™ rear and side windows, reclining/sliding suspension seat with headrest, armrests, lumbar support, heater, air conditioner, AM/FM stereo, cigarette lighter, pop-up skylight window, and intermittent wiper with washer. Front window slides upward for storage and the lower front window is removable. Control levers are located in 4-position tilting control consoles. Reliable soft-touch switches. Easy-to-read illuminated LCD service monitor keeps operator in touch with critical machine functions.

Heater output ..... 20,240 BTU/hr (5 100 kcal/hr)  
A/C output ..... 18,250 BTU/hr (4 600 kcal/hr)  
Noise level (inside cab) ..... 71 dB(A)  
Noise level (exterior) ..... 103 dB(A)

## Swing

Planetary reduction powered by axial piston motor. Internal ring gear with grease cavity for swing pinion. Swing bearing is single-row shear type ball bearing. Swing cushion valve and dual stage relief valves for smooth swing deceleration and stops. Mechanical disc swing brake. Auto power swing.

Swing speed ..... 0 – 8.2 rpm  
Tail swing ..... 9' 8" (2.95 m)  
Swing torque ..... 73,020 ft.-lbs. (99 kg.-m.)

## Undercarriage

X-style carbody is integrally welded for strength and durability. Grease cylinder track adjusters with shock absorbing springs. LC undercarriage with sealed track, lubricated rollers and idlers. Two-bar grouser track shoes.

Carrier rollers ..... 2 per side  
Track rollers ..... 8 per side  
Track link pitch ..... 8.5" (215.9 mm)  
Shoes ..... 47 per side  
Shoe width ..... 27.6" (700 mm)  
Ground pressure ..... 8.12 psi (.57 kg/cm<sup>2</sup>)

## Travel System

Two-speed independent hydrostatic travel with compact axial piston motors for increased performance. Hydraulic motor powered output shaft coupled to a planetary reduction unit and track sprocket. All hydraulic components mounted within the width of side frame.

**Automatic Downshift:** When operating in difficult travel conditions, the travel motor automatically downshifts from high to low speed for increased tractive effort and then automatically returns to high speed when travel conditions permit.

Max. travel speed ..... 1.8/3.0 mph (2.9/4.9 km/h)  
Traction force ..... 52,610 lbs. (23 860 kg)  
Gradeability ..... 70%

Spring applied, hydraulically released disc parking brake built into each motor. Each travel motor equipped with counterbalance valve to prevent overspeeding down an incline and 3-stage reliefs for smooth starts and stops.

## Lubricant and Coolant Capacity

Hydraulic tank ..... 32 gal. (120 liters)  
Hydraulic system ..... 59 gal. (225 liters)  
Final drive (per side) ..... 2.8 gal. (10.5 liters)  
Swing drive ..... 1.6 gal. (6.0 liters)  
Engine ..... 6.3 gal. (24 liters)  
Fuel tank ..... 90 gal. (340 liters)  
Cooling system ..... 7.1 gal. (27 liters)

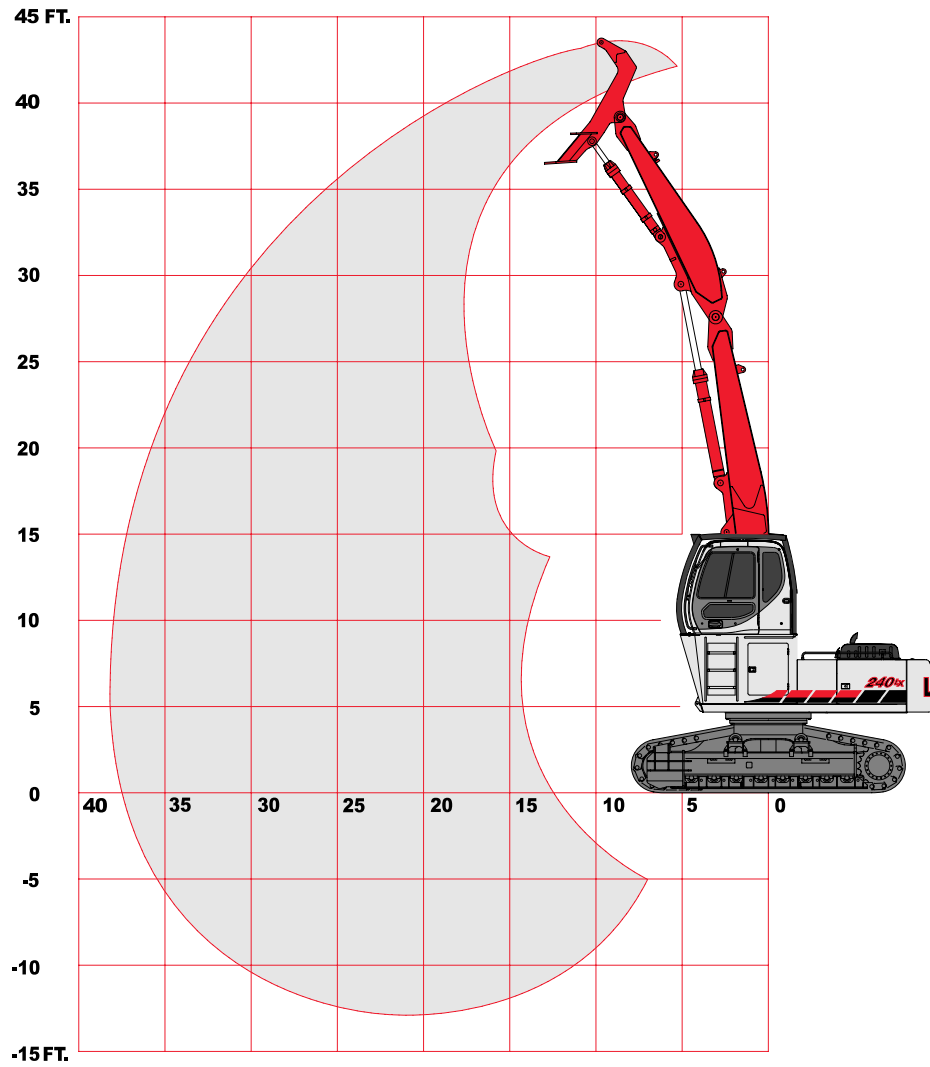
## Attachment

- Pierce 38 Ft. (11.58 m) log loading attachment w/heel
- Young 38 Ft. (11.58 m) log loading attachment w/heel

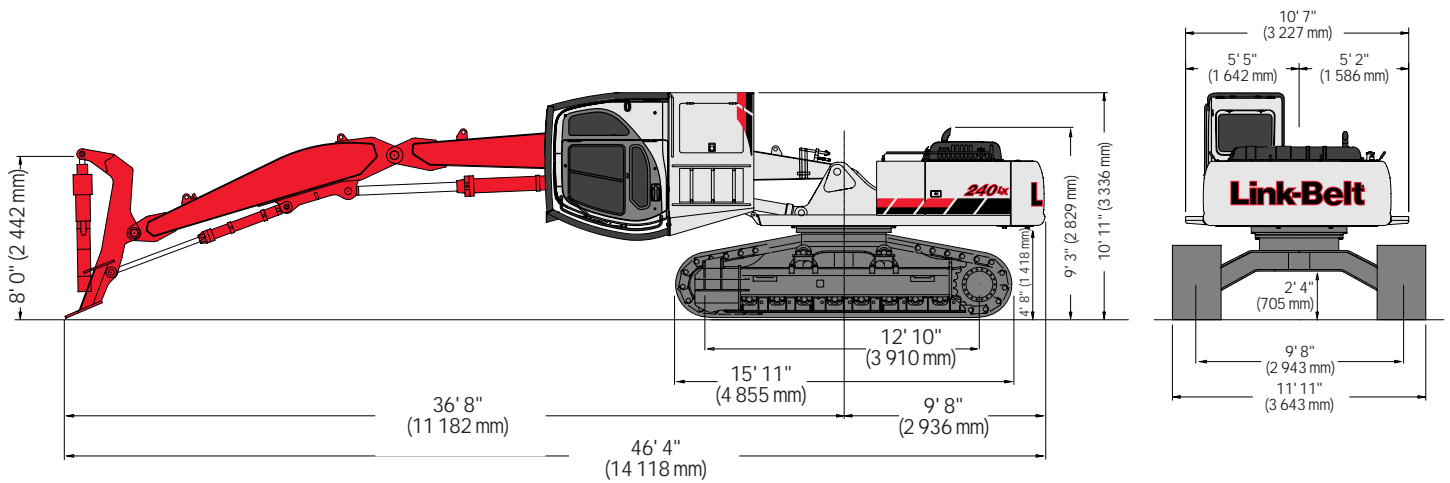
## Operating Weight

Machine weight with 27.5" (700 mm) 2 bar shoes, 4' 0" (1 219mm) cab riser, 38' 0" (11.58m) attachment, logging guarding package, 1/2 tank of fuel and a 1,700 lb. (771kg) grapple ..... 74,794 lbs. (33 926 kg)

## Working Ranges - w/Pierce Attachment



## Dimensions - w/Pierce Attachment



# Specifications (continued)

## Lifting Capacities

240 LX Timber Loader w/Pierce 38 Ft. Attachment

Grapple Pin Height		Radius of Load											
		10' 0" (3.05 m)		15' 0" (4.57 m)		20' 0" (6.10 m)		25' 0" (7.62 m)		30' 0" (9.14 m)		35' 0" (10.67 m)	
		End	Side	End	Side	End	Side	End	Side	End	Side	End	Side
40' 0" (12.19 m)	lbs. kg			29,390* 13 330*	29,390* 13 330*								
35' 0" (10.67 m)	lbs. kg					22,250* 10 090*	21,490* 9 740	19,070* 8 650	14,450* 6 550				
30' 0" (9.14 m)	lbs. kg					21,160* 9 590*	21,160* 9 590*	18,900* 8 570*	14,920* 6 760	14,090* 6 390	10,650* 4 830		
25' 0" (7.62 m)	lbs. kg					21,240* 9 630*	21,240* 9 630*	18,740* 8 500*	15,160* 6 870	14,200* 6 440	10,750* 4 870		
20' 0" (6.10 m)	lbs. kg					22,200* 10 060*	22,070* 10 010	19,200* 8 700*	15,040* 6 820	14,280* 6 470	10,830* 4 910	10,770* 4 880	8,050* 3 650
15' 0" (4.57 m)	lbs. kg					23,960* 10 860*	21,300* 9 660	19,290* 8 740	14,660* 6 640	14,120* 6 400	10,680* 4 840	10,680* 4 840	7,960* 3 610
10' 0" (3.05 m)	lbs. kg			32,650* 14 800*	32,290* 14 640	25,850* 11 720*	20,230* 9 170	18,690* 8 470	14,100* 6 390	13,840* 6 270	10,410* 4 720	10,630* 4 820	7,910* 3 580
5' 0" (1.52 m)	lbs. kg			36,060* 16 350*	29,500* 13 380	25,810* 11 700	19,070* 8 650	18,050* 8 180	13,500* 6 120	13,520* 6 130	10,110* 4 580	10,510* 4 760	7,800* 3 530
0" (0 m)	lbs. kg			30,550* 13 850*	27,790* 12 600	24,780* 11 240	18,120* 8 210	17,250* 7 820	13,000* 5 890	13,250* 6 010	9,850* 4 460	10,440* 4 730	7,730* 3 500
-5' 0" (-1.52 m)	lbs. kg	8,960* 4 060*	8,960* 4 060*	19,040* 8 630*	19,040* 8 630*	24,210* 10 980	17,600* 7 980	17,200* 7 800	12,700* 5 760	13,100* 5 940	9,710* 4 400	9,200* 4 170*	7,730* 3 500
-10' 0" (-3.05 m)	lbs. kg			24,380* 11 050*	24,380* 11 050*	19,680* 8 920*	17,490* 7 930	14,820* 6 720*	12,640* 5 730	10,870* 4 930*	9,660* 4 380		

### Notes: Excavator lifting capacities

- Lifting capacities shown should not be exceeded. Weight of all lifting accessories must be deducted from the above lifting capacities.
- Lifting capacities shown include a bucket with the weight as indicated. If a heavier bucket, harvesting processor or other tool is used the additional weight must be deducted from the ratings.
- Lifting capacities are based on machine standing on firm, uniform supporting surface. User must make allowances for job conditions such as soft or uneven ground, sudden stopping of loads, or other unfavorable job conditions.
- Lifting capacities shown do not exceed 75% of minimum tipping loads or 87% of hydraulic capacities. Capacities marked with an asterisk (\*) are limited by hydraulic capacities.
- These capacities apply to machines having 5410 psi boom hoist cylinder pressure.
- Least stable position is over the side.
- Operator should be fully acquainted with the Operator's Manual & Operating Safety Booklet, furnished by the manufacturers before operating the machine.
- Capacities apply only to the machine as originally manufactured and normally equipped by LBX Company LLC.
- Lift capacity ratings are calculated per SAE J/ISO 10567, "Earthmoving Machinery - Hydraulic Excavators - Lift Capacity".

## Standard Equipment

- Inte-LX™ Computer System
- Self-diagnostic system
- Five selectable working modes
- One-touch decelerator
- Auto idling system
- Auto idle start
- Low idle up
- Auto engine warm up
- Cushioned attachment control
- Free swing control
- Auto power swing
- Travel alarm
- Nephron® filtration system
- Swing-out oil cooler
- Low noise/low vibration cab floating on 6 fluid filled mounts
- Sliding/reclining, suspension cloth
- upholstered seat with adjustable arm rests and lumbar support, retracting seat belt
- 3-position tilting consoles
- 4th position on left console for entering and exiting the cab also serves as control lock-out
- Illuminated LCD service monitor
- Climate control heater and air conditioner
- Horn, interior lighting, AM/FM STEREO radio, digital clock, floor mat, cigarette lighter
- Safety glass front windows with automatic lock and intermittent rise-up windshield wiper and washer, large LEXAN® rear/side windows
- Gate lock and gate lock lever (control lock-out device)
- Vandalism locks/guarding
- Common key for cab & house doors, engine hood, tool box, and fuel cap
- Hand grab rails both sides
- Rear view mirror, coat hook, storage compartment
- High-wide undercarriage
- Chrome plated boom foot pin with oil impregnated bushing
- Heavy Duty upper and lower undercovers
- 4' hydraulically tilting cab riser w/logger guarding
- Grapple open/close/rotating system
- 38' live heel logging front
- 12,870 lbs. (5 839 kg) counterweight

## Options

- Road Builder Package
- Auxiliary fuel tank (located at right front corner)