

Link-Belt
EARTHMOVING • FORESTRY
MATERIAL HANDLING EQUIPMENT

210 Lx

Timber
Loader

Operating Weight: 59,013 lbs (26 768 kg)

SAE Net Horsepower: 138 HP (103 kW)



Specifications

Engine

Isuzu BB-6BG1T Electric engine control, turbocharged, water cooled, 4-cycle diesel, 6 cylinder, 396 CID (6 494 cc), 4.13" (105 mm) bore x 4.92" (125 mm) stroke. EPA Tier II compliant.

SAE net horsepower .. 138 HP (103 kW) @ 1,950 rpm
Maximum torque . 392 ft.-lbs. (532 N-m) @ 1,600 rpm
Starter Electric, 24V
Alternator 40 amp
Battery Cold Cranking 780 amp
Air cleaner Double element
Governor Electrical
Avg. Fuel Usage 3.92 gph (14.82 l/hr)

Hydraulic System

Two variable displacement axial piston pumps, one pump for grapple rotate, and one gear pump for pilot controls, with Link-Belt Inte-LX Control System. Link-Belt Inte-LX Control includes: electric engine control, five selectable working modes, auto/one touch idling, automatic speed shifting, free swing, cushioned attachment, swing anti-braking system, and two safety lockout switches including gate lock.

Hydraulic Pumps

Two variable volume piston pumps provide power for attachment, swing and travel.

Maximum flow 2 x 53.1 gpm (2 x 201 l/min)
Pilot pump max. flow 5.3 gpm (20 l/min)
Aux. pump max. flow 7.4 gpm (28 l/min)

Relief Valve Settings

Boom/arm/bucket 4,970 psi (350 kg/cm²)
Swing circuit 4,050 psi (285 kg/cm²)
Travel 4,970 psi (350 kg/cm²)

Hydraulic Cylinders – Pierce attachment cylinders – bore x rod x stroke.

Boom .. (2) 5.5" x 4.0" x 43.6" (140 mm x 102 mm x 1 107 mm)

Arm .. 6.0" x 4.25" x 57.5" (152 mm x 108 mm x 1 461 mm)

Heel 4.5" x 2.75" x 36.0" (114 mm x 70 mm x 914 mm)

Oil Filtration

Nephron filter 1 micron
Return, pilot 10 micron
Suction filter 105 micron

Control Valve One 4-spool valve and one 5-spool valve with auxiliary spool.

Cab and Controls

Cab mounted on 6 fluid filled mountings. Features include a safety glass front window and LEXAN® MARGARD™ rear and side windows, reclining/sliding suspension seat with headrest, armrests, lumbar support, heater, air conditioner, AM/FM stereo, cigarette lighter, pop-up skylight window, and intermittent wiper with washer. Front window slides upward for storage and the lower front window is removable. Control levers are located in 4-position tilting control consoles. Reliable soft-touch switches. Easy-to-read illuminated LCD service monitor keeps operator in touch with critical machine functions.

Heater output 20,240 BTU/hr (5 100 kcal/hr)
A/C output 18,250 BTU/hr (4 600 kcal/hr)
Noise level (inside cab) 72 dB(A)
Noise level (exterior) 101 dB(A)

Swing

Planetary reduction powered by axial piston motor. Internal ring gear with grease cavity for swing pinion. Swing bearing is single-row shear type ball bearing. Swing cushion valve and dual stage relief valves for smooth swing deceleration and stops. Mechanical disc swing brake. Auto power swing.

Swing speed 0 – 10.2 rpm
Tail swing 9' 0" (2.75 m)
Swing torque 55,170 ft.-lbs. (74.8 kg.-m.)

Undercarriage

X-style carbody is integrally welded for strength and durability. Grease cylinder track adjusters with shock absorbing springs. LC undercarriage with sealed track, lubricated rollers and idlers. Two-bar grouser track shoes.

Carrier rollers 2 per side
Track rollers 9 per side
Track link pitch 7.5" (190 mm)
Shoes 51 per side
Shoe width 27.6" (700 mm)
Ground pressure 6.60 psi (.46 kg/cm²)

Travel System

Two-speed independent hydrostatic travel with compact axial piston motors for increased performance. Hydraulic motor powered output shaft coupled to a planetary reduction unit and track sprocket. All hydraulic components mounted within the width of side frame.

Automatic Downshift: When operating in difficult travel conditions, the travel motor automatically downshifts from high to low speed for increased tractive effort and then automatically returns to high speed when travel conditions permit.

Max. travel speed 2.0/3.3 mph (3.2/5.3 km/h)
Traction force 42,938 lbs. (19 473 kg)
Gradeability 70%

Spring applied, hydraulically released disc parking brake built into each motor. Each travel motor equipped with counterbalance valve to prevent overspeeding down an incline and 3-stage reliefs for smooth starts and stops.

Lubricant and Coolant Capacity

Hydraulic tank 32 gal. (120 liters)
Hydraulic system 54 gal. (206 liters)
Final drive (per side) 1.3 gal. (5.0 liters)
Swing drive 1.6 gal. (6.0 liters)
Engine 6.3 gal. (24 liters)
Fuel tank 90 gal. (340 liters)
Cooling system 7.1 gal. (27 liters)

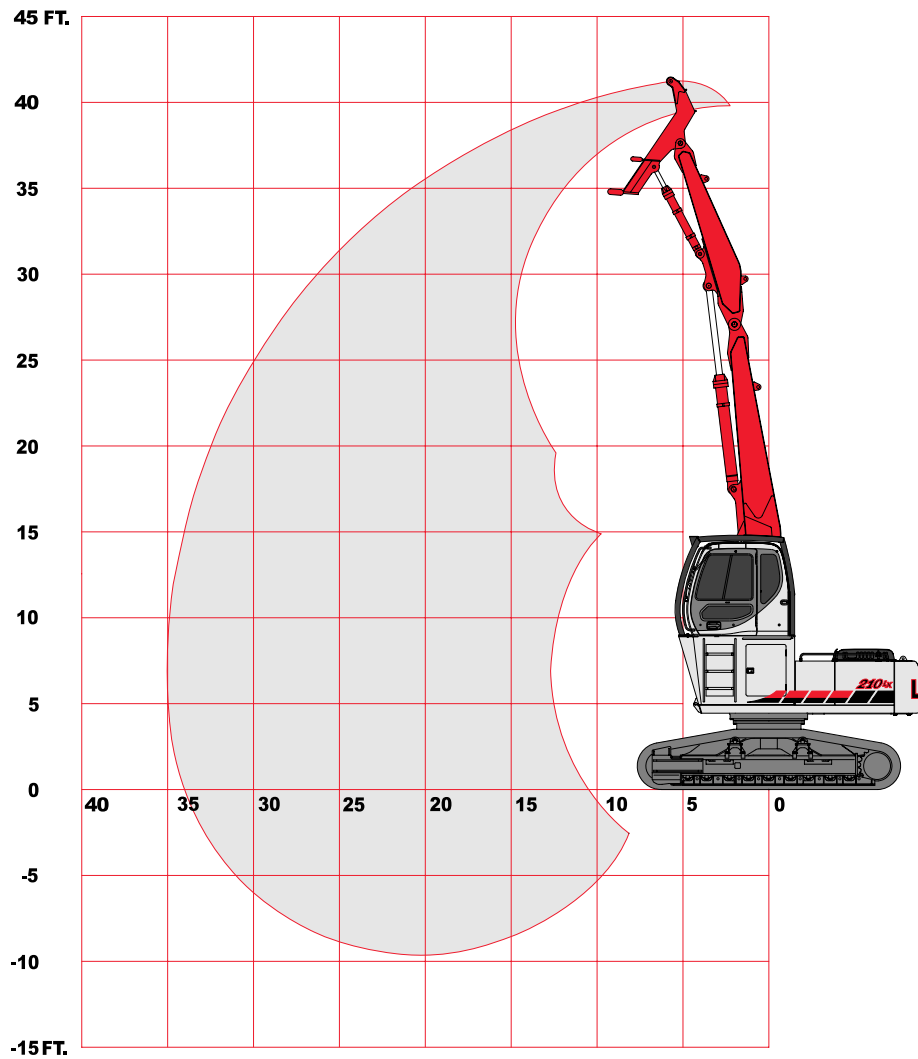
Attachment

- Pierce 36 Ft. (10.97 m) log loading attachment w/heel
- Young 36 Ft. (10.97 m) log loading attachment w/heel

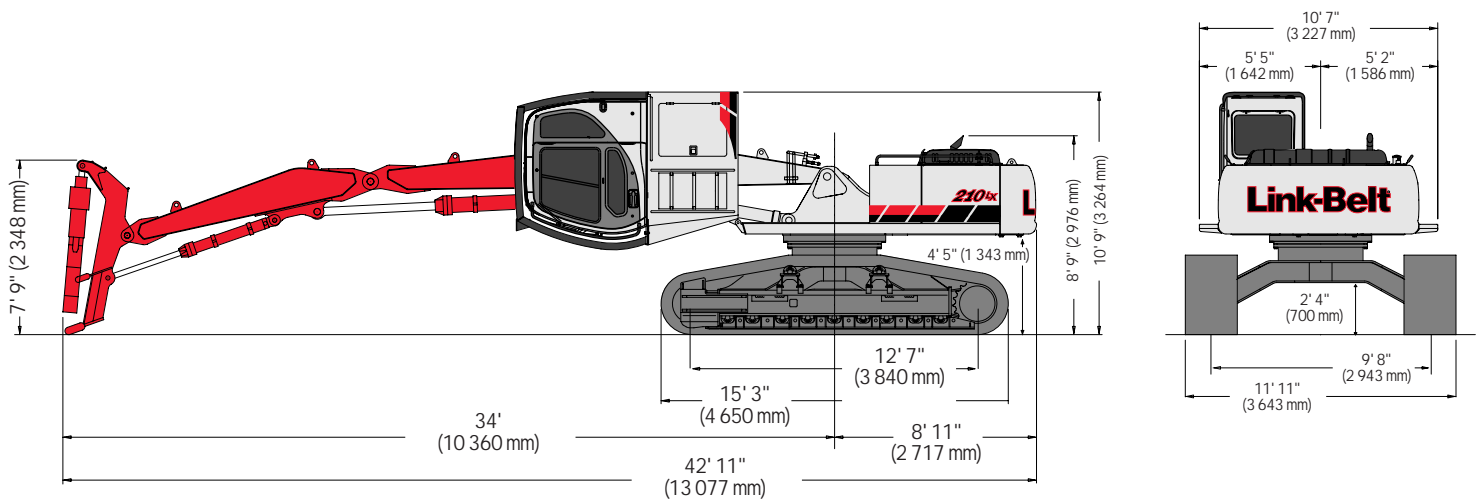
Operating Weight

Machine weight with 27.5" (700 mm) 2 bar shoes, 4' 0" (1 219 mm) cab riser, 36' 0" (10.97 m) attachment, logging guarding package, 1/2 tank of fuel and a 1,150 lb. (522 kg) grapple 59,013 lbs. (26 768 kg)

Working Ranges - w/Pierce Attachment



Dimensions - w/Pierce Attachment



Specifications (continued)

Lifting Capacities

210 LX Timber Loader w/Pierce 36 Ft. Attachment

Grapple Pin Height		Radius of Load									
		10' 0" (3.05 m)		15' 0" (4.57 m)		20' 0" (6.10 m)		25' 0" (7.62 m)		30' 0" (9.14 m)	
		End	Side	End	Side	End	Side	End	Side	End	Side
40' 0" (12.19 m)	lbs. kg	27120 * 12300 *	27120 * 12300 *								
35' 0" (10.67 m)	lbs. kg			22630 * 10260 *	22630 * 10260 *	16720 * 7580 *	16090 7290				
30' 0" (9.14 m)	lbs. kg			21220 * 9620 *	21220 * 9620 *	18140 * 8220 *	16710 7570	14740 6680	11270 5110		
25' 0" (7.62 m)	lbs. kg			21270 * 9640 *	21270 * 9640 *	17910 * 8120 *	16930 7670	15020 6810	11530 5220		
20' 0" (6.10 m)	lbs. kg			18780 * 8510 *	18780 * 8510 *	18630 * 8450 *	16760 7600	15020 6810	11530 5220	10930 4950	8340 3780
15' 0" (4.57 m)	lbs. kg			19710 * 8940 *	19710 * 8940 *	19970 * 9050 *	16280 7380	14800 6710	11330 5130	10920 4950	8330 3770
10' 0" (3.05 m)	lbs. kg			27660 * 12540 *	24760 11230	20720 9390	15610 7080	14460 6550	11010 4990	10790 4890	8210 3720
5' 0" (1.52 m)	lbs. kg			30010 * 13610 *	23130 10490	19980 9060	14920 6760	14110 6400	10670 4830	10640 4820	8060 3650
0 (0 m)	lbs. kg			18460 * 8370 *	18460 * 8370 *	19440 8810	14430 6540	13830 6270	10410 4720	10520 4770	7950 3600
-5' 0" (-1.52 m)	lbs. kg	6900 * 3120 *	6900 * 3120 *	17780 * 8060 *	17780 * 8060 *	19190 8700	14200 6440	13700 6210	10290 4660	10490 4750	7920 3590

Notes: Excavator lifting capacities

- Lifting capacities shown should not be exceeded. Weight of all lifting accessories must be deducted from the above lifting capacities.
- Lifting capacities shown include a bucket with the weight as indicated. If a heavier bucket, harvesting processor or other tool is used the additional weight must be deducted from the ratings.
- Lifting capacities are based on machine standing on firm, uniform supporting surface. User must make allowances for job conditions such as soft or uneven ground, sudden stopping of loads, or other unfavorable job conditions.
- Lifting capacities shown do not exceed 75% of minimum tipping loads or 87% of hydraulic capacities. Capacities marked with an asterisk (*) are limited by hydraulic capacities.
- These capacities apply to machines having 5410 psi boom hoist cylinder pressure.
- Least stable position is over the side.
- Operator should be fully acquainted with the Operator's Manual & Operating Safety Booklet, furnished by the manufacturers before operating the machine.
- Capacities apply only to the machine as originally manufactured and normally equipped by LBX Company LLC.
- Lift capacity ratings are calculated per SAE J/ISO 10567, "Earthmoving Machinery – Hydraulic Excavators – Lift Capacity".

Standard Equipment

- Inte-LX™ Computer System
- Self-diagnostic system
- Five selectable working modes
- One-touch decelerator
- Auto idling system
- Auto idle start
- Low idle up
- Auto engine warm up
- Cushioned attachment control
- Free swing control
- Auto power swing
- Travel alarm
- Nephron® filtration system
- Swing-out oil cooler
- Low noise/low vibration cab floating on 6 fluid filled mounts
- Sliding/reclining, suspension cloth upholstered seat with adjustable arm rests and lumbar support, retracting seat belt
- 3-position tilting consoles
- 4th position on left console for entering and exiting the cab also serves as control lock-out
- Illuminated LCD service monitor
- Climate control heater and air conditioner
- Horn, interior lighting, AM/FM STEREO radio, digital clock, floor mat, cigarette lighter
- Safety glass front windows with automatic lock and intermittent rise-up windshield wiper and washer, large LEXAN® rear/side windows
- Gate lock and gate lock lever (control lock-out device)
- Vandalism locks/guarding
- Common key for cab & house doors, engine hood, tool box, and fuel cap
- Hand grab rails both sides
- Rear view mirror, coat hook, storage compartment
- High-wide undercarriage
- Chrome plated boom foot pin with oil impregnated bushing
- Heavy Duty upper and lower undercovers
- 4' hydraulically tilting cab riser w/logger guarding
- Grapple open/close/rotating system
- 36' live heel logging front
- 9,830 lbs. (4 460 kg) counterweight

Options

- Road Building Package
- Auxiliary fuel tank (located right side, front corner)