

# 4040 PH

## SPECIFICATIONS

### Engine

Isuzu AQ-6HK1X Final Tier 4 turbocharged diesel engine with electronic control (ECM) and high pressure common-rail fuel injection, 6-cylinder, water-cooled, Cooled Exhaust Gas Recirculation (CEGR), Intercooler, Variable-Geometry Turbocharger (VGT), Diesel Oxidation Catalyst (DOC) and Selective Catalytic Reduction (SCR) system with Dosing Control Module (DCM) and heated DEF lines.

Electronic fuel pump and priming, Fuel cooler, Auto-idle start, Auto warm-up, EPF engine protection, dual-stage fuel filtration, remote oil filter, engine oil sample port, green plug oil drain, double element air filter.

SAE J 1349 net hp ..... 207 HP (154 kW) @ 1,800 rpm  
 Displacement ..... 7.8 L  
 Maximum torque ..... 626 bf-ft (849 N-m) @ 1,500 rpm  
 Starter ..... 24V-5.0kW  
 Alternator ..... 90 amp  
 Battery ..... (2) 12-volt 128 amp hours

### Cab and Controls

Oregon OSHA/ROPS/WCB compliant side-entry forestry cab, 12" hydraulic tilting riser, SCM high-back air-suspension seat, Control panel with illuminated soft-touch switches, LCD monitor, Low-effort controls pre-wired for auxiliary hydraulics, Sliding 4-position tilting control consoles, Climate control, Sky roof, Single motor dual arm intermittent/continuous windshield wiper with washer, Single pedal travel, Travel alarm, Footrests, Cup holder, 12-volt outlet, Digital dock, 24-volt cigarette lighter, Ashtray, Dome lights, Coat hook, High output dual horns, Handrails with deflector, Floor mat, Emergency exit.

Three selectable working modes, RemoteCARE GPS system, Anti-theft password protection system, On-board self-diagnostic system with memory, Auto-idling system, One-touch decelerator, Gate lock safety shutoff.

### Hydraulic System

Open-center system, (2) variable displacement axial piston pumps, (1) gear pump for pilot controls, (1) gear pump/valve for grapple rotate, Dedicated and proprietary main control valve tuned for enhanced performance with one 4-spool valve and one 5-spool valve with auxiliary spool, Programmable auxiliary pump settings with single or double pump control, Double-acting auxiliary hydraulics and rotate circuits plumbed to boom foot, Grapple Circuit Control Valve, Processor return line fitting, Oil cooler, O-ring face seals, High-performance 6-micron return filter, Firewall.

### Hydraulic Pumps

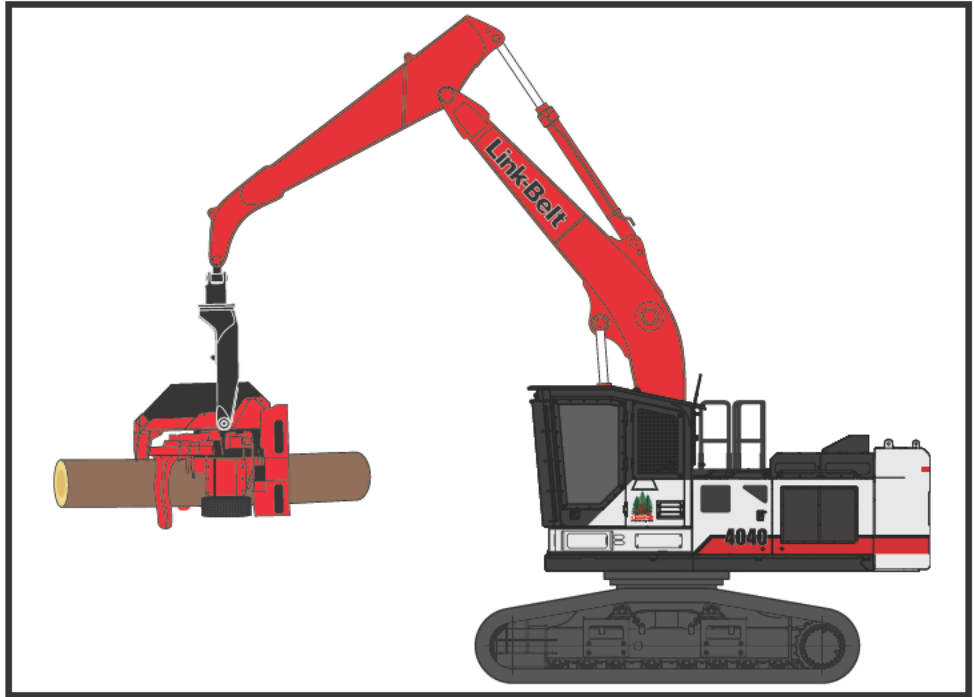
Maximum flow ..... 2 x 64.2 gpm (2 x 243 l/min)  
 Pilot pump maximum flow ..... 7.1 gpm (27 l/min)

### Relief Valve Settings

Boom/arm/tool ..... 4,970 psi (343 bar)  
 Swing circuit ..... 4,410 psi (304 bar)  
 Travel ..... 4,970 psi (343 bar)

### Hydraulic Oil Filtration

Return filter ..... 6 micron  
 Pilot filter ..... 8 micron  
 Suction screen ..... 105 micron  
 Auxiliary drain line filter ..... 8 micron



### Swing

Planetary reduction powered by axial piston motor. Internal ring gear with grease cavity for swing pinion. Swing bearing is single-row shear type ball bearing. Mechanical disc swing brake. Auto power swing. Free swing control.

Swing speed ..... 0 – 8.5 rpm  
 Tail swing ..... 11' 6" (3.51 m)  
 Swing torque ..... 82,700 lbf-ft. (112 kN·m)

### Undercarriage

High-wide / High-narrow track gauge with x-pattern carbody, Full-length track guards (2 piece, bolt-on), Sealed and strutted track chain, Sealed rollers and idlers, Idler mount reinforcement, Two-speed independent hydrostatic travel with compact planetary final drive, HD travel motor covers, Disc type brakes, Adjustable track tension, HD swivel guard - hinged.

Carrier rollers ..... 2 per side  
 Track rollers ..... 8 per side  
 Track link pitch ..... 8.50" (216 mm)  
 Shoes ..... 48 per side  
 Shoe width ..... 27.5" (700 mm)  
 Ground Pressure (less cab) ..... 9.12 psi (0.062 MPa)

### Lubricant and Coolant Capacity

Fuel tank ..... 216 gal. (820 liters)  
 Hydraulic tank ..... 39 gal. (147 liters)  
 Hydraulic system ..... 79 gal. (300 liters)  
 Final drive (per side) ..... 2.5 gal. (9.5 liters)  
 Swing drive ..... 1.3 gal. (5.0 liters)  
 Engine oil ..... 10.8 gal. (40.9 liters)  
 DEF Tank ..... 31.7 Gallons (120.0 Liters)  
 Cooling system ..... 9.5 gal. (35.9 liters)

### Travel System

Two-speed independent hydrostatic travel with compact axial piston motors. Hydraulic motor powered output shaft coupled to a planetary reduction unit and track sprocket. All hydraulic components mounted within the width of side frame. Automatic downshift. Single pedal travel. Spring applied, hydraulically released disc parking brake built into each motor. Each travel motor equipped with counterbalance valve to prevent overspeeding down an incline.

Max. travel speed ..... 1.5 - 2.5 mph (2.4 - 4.0 km/h)  
 Drawbar pull ..... 69,500 lbf (309 kN)  
 Gradeability ..... 70% (35°)

### Processor Attachment

Boom ..... 20' 2" (6.15 m)  
 Arm ..... 12' 0" (3.67 m)

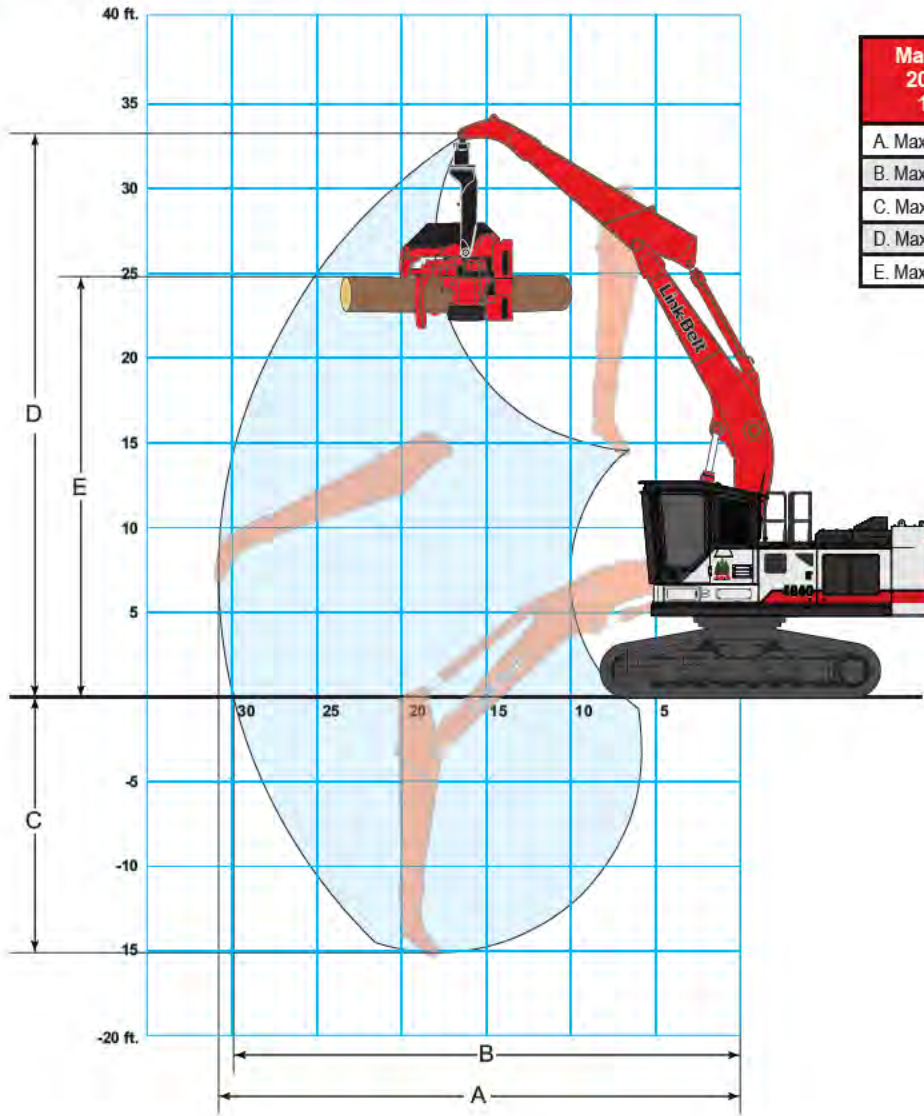
### Operating Weight - No Tool

Working weight (excluding harvester) with side-entry forestry cab, 12" (305 mm) cab riser, high-narrow undercarriage, 27.5" (700 mm) 2-bar shoes ..... 86,313 lbs (39 151 kg)

Working weight (excluding harvester) with side-entry forestry cab, 12" (305 mm) cab riser, high-wide undercarriage, 27.5" (700 mm) 2-bar shoes ..... 86,313 lbs (39 151 kg)

# 4040 PH Specifications

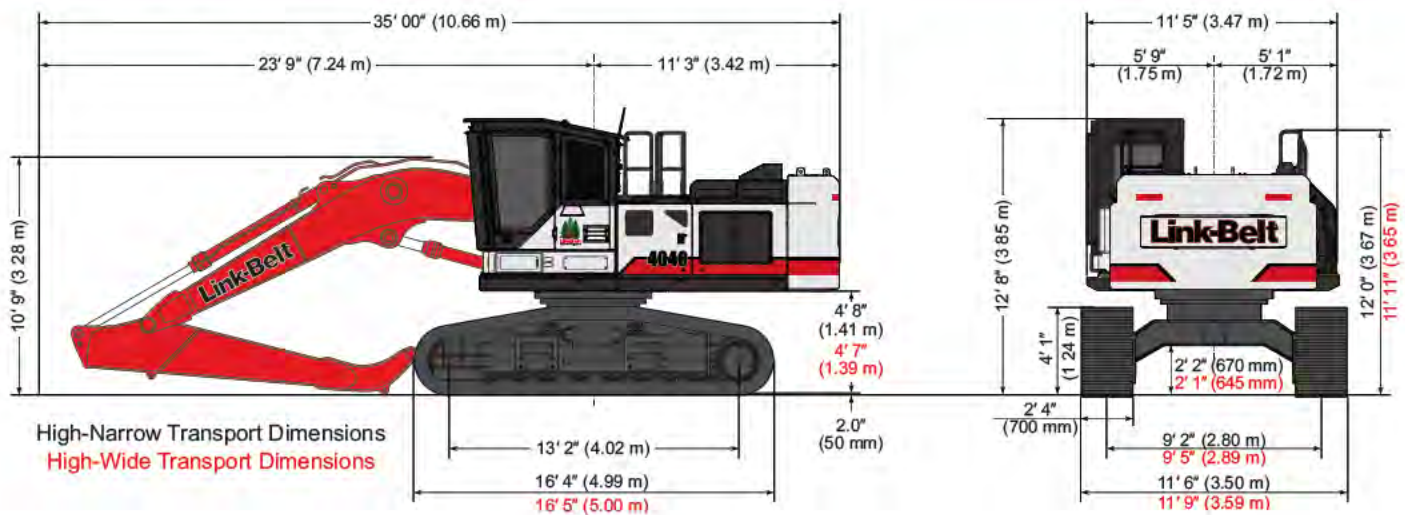
## Working Ranges



Boom Cylinders in High-Lift Position

Machine Equipped with 20' 2" (6.15 m) Boom, 12' 0" (3.67 m) Arm	High-Narrow Undercarriage	High-Wide Undercarriage
A. Maximum reach	30' 9" (9.36 m)	30' 9" (9.36 m)
B. Maximum reach @ ground level	29' 11" (9.11 m)	29' 11" (9.11 m)
C. Maximum depth	15' 1" (4.61 m)	15' 2" (4.63 m)
D. Maximum height	32' 11" (10.04 m)	32' 10" (10.02 m)
E. Maximum log level height	24' 7" (7.50 m)	24' 6" (7.48 m)

## Travel Dimensions



# 4040 PH Specifications

## Lifting Capacities

Radius of Load															
14' 0" (4.27 m) Arm with 21' 4" (6.50 m) Boom in High Lift Position with High-Narrow Undercarriage															
End Side	5' 0" (1.5 m)		10' 0" (3.0 m)		15' 0" (4.5 m)		20' 0" (6.0 m)		25' 0" (7.5 m)		30' 0" (9.0 m)		Cap at Max. Reach		
	End	Side	End	Side	End	Side	End	Side	End	Side	End	Side	End	Side	
+30' 0" (9.0 m)	lbs													11,200*	11,200*
	kg													5 020*	5 020*
+25' 0" (7.5 m)	lbs								11,700*	11,700*				10,300*	10,300*
	kg								5 750*	5 750*				4 650*	4 650*
+20' 0" (6.0 m)	lbs							16,350*	16,350*	15,100*	15,100*			10,000*	10,000*
	kg							7 470*	7 470*	7 010*	7 010*			4 540*	4 540*
+15' 0" (4.5 m)	lbs					22,200*	22,200*	20,350*	20,350*	17,900*	17,900*	11,050*	11,050*	10,050*	10,050*
	kg					10 480*	10 480*	9 430*	9 430*	8 310*	8 310*	5 640*	5 640*	4 570*	4 570*
+10' 0" (3.0 m)	lbs					31,000*	31,000*	23,400*	23,400*	19,150*	19,150*	14,100*	14,100*	10,450*	10,450*
	kg					14 360*	14 360*	10 800*	10 800*	8 830*	8 830*	6 930*	6 930*	4 750*	4 750*
+5' 0" (1.5 m)	lbs					33,600*	33,600*	24,750*	24,750*	19,650*	19,650*	15,750*	15,350	11,200*	11,200*
	kg					15 520*	15 520*	11 410*	11 410*	9 070*	9 070*	7 440*	7 120	5 090*	5 090*
Ground Line	lbs			16,250*	16,250*	33,200*	33,200*	24,700*	24,700*	19,350*	19,300	14,700*	14,700*	12,450*	12,450*
	kg			7 140*	7 140*	15 280*	15 280*	11 400*	11 400*	8 950*	8 930	7 060*	7 030	5 650*	5 650*
-5' 0" (1.5 m)	lbs	16,200*	16,200*	24,800*	24,800*	30,050*	30,050*	22,950*	22,950*	17,750*	17,750*			13,950*	13,950*
	kg	7 250*	7 250*	10 970*	10 970*	13 850*	13 850*	10 610*	10 610*	8 240*	8 240*			6 330*	6 330*
-10' 0" (3.0 m)	lbs	25,550*	25,550*	30,250*	30,250*	24,450*	24,450*	19,050*	19,050*	13,850*	13,850*			12,500*	12,500*
	kg	11 400*	11 400*	13 940*	13 940*	11 320*	11 320*	8 860*	8 860*	6 570*	6 570*			5 710*	5 710*
-15' 0" (4.5 m)	lbs			17,400*	17,400*	15,650*	15,650*	11,650*	11,650*					9,450*	9,450*
	kg			8 220*	8 220*	7 410*	7 410*	5 650*	5 650*					4 390*	4 390*

Radius of Load															
14' 0" (4.27 m) Arm with 21' 4" (6.50 m) Boom in High Lift Position with High-Wide Undercarriage															
End Side	5' 0" (1.5 m)		10' 0" (3.0 m)		15' 0" (4.5 m)		20' 0" (6.0 m)		25' 0" (7.5 m)		30' 0" (9.0 m)		Cap at Max. Reach		
	End	Side	End	Side	End	Side	End	Side	End	Side	End	Side	End	Side	
+30' 0" (9.0 m)	lbs													11,200*	11,200*
	kg													5 020*	5 020*
+25' 0" (7.5 m)	lbs								11,700*	11,700*				10,300*	10,300*
	kg								5 750*	5 750*				4 650*	4 650*
+20' 0" (6.0 m)	lbs							16,350*	16,350*	15,100*	15,100*			10,000*	10,000*
	kg							7 470*	7 470*	7 010*	7 010*			4 540*	4 540*
+15' 0" (4.5 m)	lbs					22,200*	22,200*	20,350*	20,350*	17,900*	17,900*	11,050*	11,050*	10,050*	10,050*
	kg					10 480*	10 480*	9 430*	9 430*	8 310*	8 310*	5 640*	5 640*	4 570*	4 570*
+10' 0" (3.0 m)	lbs					31,000*	31,000*	23,400*	23,400*	19,150*	19,150*	14,100*	14,100*	10,450*	10,450*
	kg					14 360*	14 360*	10 800*	10 800*	8 830*	8 830*	6 930*	6 930*	4 750*	4 750*
+5' 0" (1.5 m)	lbs					33,600*	33,600*	24,750*	24,750*	19,650*	19,650*	15,750*	15,750*	11,200*	11,200*
	kg					15 520*	15 520*	11 410*	11 410*	9 070*	9 070*	7 440*	7 340	5 090*	5 090*
Ground Line	lbs			16,250*	16,250*	33,200*	33,200*	24,700*	24,700*	19,350*	19,350*	14,700*	14,700*	12,450*	12,450*
	kg			7 140*	7 140*	15 280*	15 280*	11 400*	11 400*	8 950*	8 950*	7 060*	7 060*	5 650*	5 650*
-5' 0" (1.5 m)	lbs	16,200*	16,200*	24,800*	24,800*	30,050*	30,050*	22,950*	22,950*	17,750*	17,750*			13,950*	13,950*
	kg	7 250*	7 250*	10 970*	10 970*	13 850*	13 850*	10 610*	10 610*	8 240*	8 240*			6 330*	6 330*
-10' 0" (3.0 m)	lbs	25,550*	25,550*	30,250*	30,250*	24,450*	24,450*	19,050*	19,050*	13,850*	13,850*			12,500*	12,500*
	kg	11 400*	11 400*	13 940*	13 940*	11 320*	11 320*	8 860*	8 860*	6 570*	6 570*			5 710*	5 710*
-15' 0" (4.5 m)	lbs			17,400*	17,400*	15,650*	15,650*	11,650*	11,650*					9,450*	9,450*
	kg			8 220*	8 220*	7 410*	7 410*	5 650*	5 650*					4 390*	4 390*

### Notes: Lifting capacities

- Lifting capacities shown should not be exceeded. Weight of all lifting accessories must be deducted from the above lifting capacities. Lifting capacities for Log Loader attachment include a heel rack, but not grapple. Addition of grapple weight must be deducted from lift capacities.
- Lifting capacities are based on machine standing on firm, uniform supporting surface. User must make allowances for job conditions such as soft or uneven ground.
- Lifting capacities shown do not exceed 75% of minimum tipping loads or 87% of hydraulic capacities. Capacities marked with an asterisk (\*) are limited by hydraulic capacities.
- Least stable position is over the side.
- Operator should be fully acquainted with the Operator's Manual & Operating Safety Booklet, furnished by LBX before operating the machine.
- Capacities apply only to the machine as originally manufactured and normally equipped by LBX Company LLC.

# 4040 PH Specifications

## Standard Equipment

---

- Oregon OSHA/ROPS/WCB compliant side-entry forestry cab with sky roof and escape hatch
- (12) LED exterior lights; (6) cab, (2) RH corner guard, (2) arm, (2) riser.
- Key fob with remote machine light-up functionality; (2) riser step, (3) cab
- SCM air-suspension heated seat, sliding/reclining, adjustable armrests, lumbar support, retractable seat belt, +/- 5 degree tilt
- 4-position tilting consoles with memory position and hydraulic lock-out
- Auto climate control a/c and heat, defrost
- Sirius® Satellite ready sound system with AM/FM, MP3 port, USB port, dual speakers and mute button
- Job ticket slot, cup holder, 12-volt accessory outlet, digital clock, 24-volt cigarette lighter, ashtray, dome light, coat hook, high output dual horn, floor mat
- 2-position LED swivel map lights with red ambient illumination for safety and night vision compatibility.
- High definition LED monitor with full color 7" display
- Anti-theft device
- Single motor dual arm intermittent/continuous windshield wiper with washer
- Single pedal travel
- Travel alarm with cancellation switch
- CB radio and antenna mounting provision
- EPA Tier IV Isuzu diesel engine, no DPF system to maintain
- 90 amp alternator
- Common rail fuel injection
- Turbocharger with intercooler
- Neutral safety start
- Idle start
- Glow plug pre-heat
- Auto engine warm-up
- Auto idling system
- One-touch idle
- Dual remote fuel filters with water separation
- Double element air filter with in-cab restriction indicator (SE only)
- Rear mounted counterweight fuel tank
- Remote, full-flow engine oil filter
- Green plug engine oil drain
- EPF Engine Protection
- Emergency engine stop
- Open-center hydraulic system
- Three selectable work modes
- Auto swing priority
- Auxiliary hydraulics for open/close/rotate
- Harvester Processor return line connection
- Pre-set auxiliary pump settings
- Control levers pre-wired for auxiliary
- Sealed and lubricated track chain
- Forestry-style upper roller brackets with scrapers
- Two-speed with auto shift and straight travel
- Planetary drive
- Spring-applied, hydraulic release brake
- Hydraulic track adjust
- 27.5" (700 mm) 2-bar grouser
- Full-length track guards (2 piece, bolt-on)
- HD purpose-built swivel guard belly pan
- HD purpose-built upper belly pans
- HD purpose-built reinforced frame (upper & lower)
- HD purpose-built pump and radiator doors
- HD purpose-built tank skin
- HD purpose-built full length catwalks with non-skid edge treatment- welded
- HD purpose-built turntable bearing and swing motor
- HD purpose-built travel motor covers
- RH corner guard with (2) lights and (2) horns
- HD boom cylinder guard
- Vandal locks with common key
- Non-skid surface pads
- Attachment cushion valve
- Boom regeneration
- Boom and arm holding valves
- Cylinder cushion - integral
- Centralized lube banks
- Engine oil and hydraulic oil sample ports
- On-board diagnostic system
- 14,200 lbs (6 400 kg) forestry counterweight
- Rear view camera (full time display)
- Battery disconnect switch
- RemoteCARE – telematics
- 2-position sun shade
- ISO compliant guard & hand rails along upper structure
- Large RH storage box

## Options

---

- 1-1/4" front window polycarbonate
- High-Wide undercarriage 11' 11" (3.64 m)
- High-Narrow undercarriage 11' 5" (3.50 m)
- "Hockey Stick" guard for RH front corner guard
- 27.5" (700 mm) single-bar grouser
- 27.5" (700 mm) 3-bar grouser
- Hydraulic reversible fan

---

LBX Company is the proud maker of quality Link-Belt excavators and is located in Lexington, KY.

#LBX2297 Litho in USA 3/16 LBX® and Link-Belt® are registered trademarks. Copyright 2016. All rights reserved.

We are constantly improving our products and therefore reserve the right to change designs and specifications.

**Link-Belt**  
**FORESTRY**  
linkbeltforestry.com