

## Specifications

### Engine

Isuzu AA-6HK1XQB Electric engine control, water cooled, 4-cycle diesel, 6 cylinder, turbo-charged with intercooler, 475 CID (7 790 cc), 4.53" (115 mm) bore x 4.92" (125 mm) stroke. EPA Tier II compliant.

SAE net horsepower ..... 247 HP (184 kW) @ 2,000 rpm  
Maximum torque ..... 687 ft.-lbs. (932 N-m) @ 1,600 rpm  
Starter ..... Electric, 24V  
Alternator ..... 50 amp  
Battery Cold Cranking ..... 1146 amps  
Air cleaner ..... Double element  
Governor ..... Electronic

### Hydraulic System

Two variable displacement axial piston pumps and one gear pump for pilot controls, with Link-Belt Inte-LX™ Control System. Link-Belt Inte-LX™ Control includes: electric engine control, five selectable working modes, automatic power-up, auto/one touch idling, automatic speed shifting, free swing, cushioned attachment, swing anti-braking system, and two safety lockout switches including gate lock.

#### Hydraulic Pumps

Two variable volume piston pumps provide power for attachment, swing and travel.  
Auxiliary pump for grapple rotate.

Maximum flow ..... 2 x 75 gpm (2 x 284 l/min)  
Pilot pump max. flow ..... 8.2 gpm (31 l/min)  
Aux. pump max. flow ..... 10.8 gpm (41 l/min)

#### Relief Valve Settings

Attachment ..... 4,970 psi (350 kg/cm<sup>2</sup>)  
Swing circuit ..... 4,260 psi (300 kg/cm<sup>2</sup>)  
Travel ..... 4,970 psi (350 kg/cm<sup>2</sup>)

#### Oil Filtration

Nephron® filter ..... 1 micron  
Return, pilot ..... 10 micron  
Suction filter ..... 105 micron

**Control Valve** One 4-spool valve and one 5-spool valve with auxiliary spool.

### Cab and Controls

Cab mounted on 6 fluid filled mountings. Features include a safety glass front window and LEXAN® MARGARD™ rear and side windows, reclining/sliding suspension seat with headrest, armrests, lumbar support, heater, air conditioner, AM/FM stereo, cigarette lighter, pop-up skylight window, and intermittent wiper with washer. Front window slides upward for storage and the lower front window is removable. Control levers are located in 3-position tilting control consoles. Reliable soft-touch switches. Easy-to-read illuminated LCD service monitor keeps operator in touch with critical machine functions.

Heater output ..... 20,240 BTU/hr (5 100 kcal/hr)  
A/C output ..... 18,250 BTU/hr (4 600 kcal/hr)

### Swing

Planetary reduction powered by axial piston motor. Internal ring gear with grease cavity for swing pinion. Swing bearing is single-row shear type ball bearing. Swing cushion valve and dual stage relief valves for smooth swing deceleration and stops. Mechanical disc swing brake. Auto power swing.

Swing speed ..... 0 – 8.1 rpm  
Tail swing ..... 11' 7" (3.52 m)  
Swing torque ..... 112,110 ft.-lbs. (152.0 kNm)

### Undercarriage

High-wide X-style carbody is integrally welded for strength and durability. Grease cylinder track adjusters with shock absorbing springs. LC undercarriage with sealed track, lubricated rollers and idlers. Two-bar grouser track shoes.

Carrier rollers ..... 2 per side  
Track rollers ..... 9 per side  
Track link pitch ..... 9" (228.6 mm)  
Shoes ..... 50 per side  
Shoe width ..... 27.5" (700 mm)  
Ground pressure ..... 10.43 psi (.73 kg/cm<sup>2</sup>)

### Travel System

Two-speed independent hydrostatic travel with compact axial piston motors for increased performance. Hydraulic motor powered output shaft coupled to a planetary reduction unit and track sprocket. All hydraulic components mounted within the width of side frame.

**Automatic Downshift:** When operating in difficult travel conditions, the travel motor automatically downshifts from high to low speed for increased tractive effort and then automatically returns to high speed when travel conditions permit.

Max. travel speed ..... 1.6/2.6 mph (2.5/4.2 km/h)  
Traction force ..... 80,030 lbs. (36 301 kg)  
Gradeability ..... 70%

Spring applied, hydraulically released disc parking brake built into each motor. Each travel motor equipped with counterbalance valve to prevent overspeeding down an incline and 3-stage reliefs for smooth starts and stops.

### Lubricant and Coolant Capacity

Hydraulic tank ..... 46 gal. (175 liters)  
Hydraulic system ..... 92 gal. (350 liters)  
Final drive (per side) ..... 4.0 gal. (15 liters)  
Swing drive ..... 2.9 gal. (11 liters)  
Engine ..... 8.7 gal. (33 liters)  
Fuel tank ..... 153 gal. (580 liters)  
Cooling system ..... 11.1 gal. (42 liters)

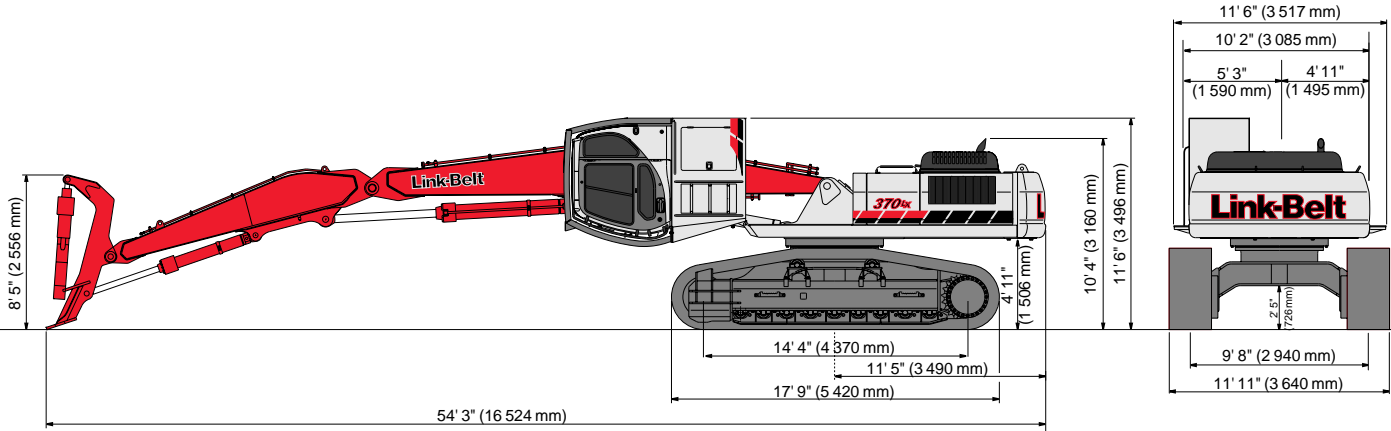
### Attachment

Pierce ..... 44'(13.4 m) Log Loading attachment w/heel  
Young ..... 44'(13.4 m) Log Loading attachment w/heel

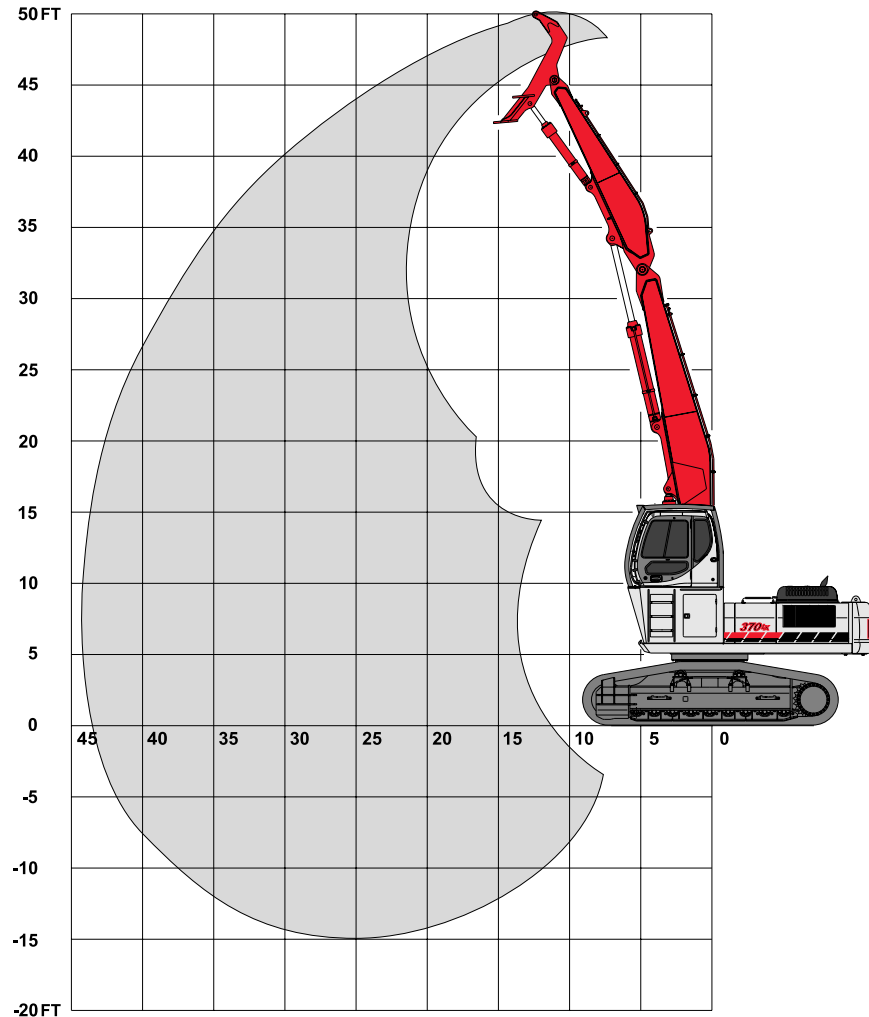
### Operating Weight

Machine weight with 27.5" (700 mm) 2 bar shoes, 4' (1 219 mm) cab riser, 44' (13.4 m) attachment, logging guarding package, 1/2 tank of fuel and a 2550 lb. (1 156 kg) grapple  
..... 107,231 lbs. (48 640 kg)

## Travel Dimensions - w/Pierce 44' (13.4 m) Attachment



## Working Range - w/Pierce 44' (13.4 m) Attachment



# Lifting Capacities

## Lift Chart w/Pierce 44' (13.4 m) Attachment

Grapple Pin Height	Radius of Load														
	10' 0" (3.05 m)		15' 0" (4.57 m)		20' 0" (6.10 m)		25' 0" (7.62 m)		30' 0" (9.14 m)		35' 0" (10.67m)		40' 0" (12.19m)		
	End	Side	End	Side	End	Side	End	Side	End	Side	End	Side	End	Side	
+45' 0" (13.72 m)	lbs. kg			46,000* 20 860*	46,000* 20 860*	33,960* 15 400*	33,130 15 020								
+40' 0" (12.19 m)	lbs. kg					34,080* 15 450*	33,930 15 390	29,580* 13 410*	23,530 10 670	18,840* 8 540*	17,180 7 790				
+35' 0" (10.67 m)	lbs. kg							28,280* 12 820*	24,410 11 070	25,360 11 500	17,540 7 950				
+30' 0" (9.14 m)	lbs. kg							28,180* 12 780*	24,640 11 170	25,400* 11 520*	17,930 8 130	19,420 8 800	13,300 6 030		
+25' 0" (7.62 m)	lbs. kg					27,690* 12 560*	27,690* 12 560*	28,940* 13 120*	24,430 11 080	25,700* 11 650*	17,900 8 110	19,650 8 910	13,510 6 120	15,470 7 010	10,440 4 730
+20' 0" (6.10 m)	lbs. kg					24,640* 11 170*	24,640* 11 170*	30,350* 13 760*	23,850 10 810	25,420 11 530	17,600 7 980	19,560 8 870	13,420 6 080	15,390 6 980	10,370 4 700
+15' 0" (4.57 m)	lbs. kg			21,770* 9 870*	21,770* 9 870*	27,350* 12 400*	27,350* 12 400*	32,100* 14 560*	22,960 10 410	24,880 11 280	17,100 7 750	19,290 8 740	13,180 5 970	15,330 6 950	10,320 4 680
+10' 0" (3.05 m)	lbs. kg			54,460* 24 700*	54,460* 24 700*	41,820* 18 960*	30,900 14 010	32,380 14 680	21,890 9 920	24,230 10 990	16,500 7 480	18,940 8 590	12,850 5 820	15,200 6 890	10,190 4 620
+5' 0" (1.52 m)	lbs. kg			31,750* 14 400*	31,750* 14 400*	43,720* 19 830*	28,960 13 130	31,230 14 160	20,890 9 470	23,580 10 690	15,900 7 210	18,580 8 420	12,510 5 670	15,050 6 820	10,050 4 550
Ground Line	lbs. kg			15,220* 6 900*	15,220* 6 900*	42,940 19 470	27,530 12 480	30,320 13 750	20,040 9 090	23,040 10 450	15,400 6 980	18,280 8 290	12,230 5 540	14,940 6 770	9,940 4 500
-5' 0" (1.52 m)	lbs. kg	5,910* 2 680*	5,910* 2 680*	11,990* 5 430*	11,990* 5 430*	39,640* 17 980*	26,800 12 150	29,750 13 490	19,530 8 850	22,690 10 290	15,080 6 840	18,110 8 210	12,070 5 470	13,470* 6 100*	9,950 4 510
-10' 0" (3.05 m)	lbs. kg			19,140* 8 680*	19,140* 8 680*	33,500* 15 190*	26,610 12 070	27,020* 12 250*	19,340 8 770	21,330* 9 670*	14,980 6 790	16,430* 7 450*	12,020 5 450		

### Notes: Timber Loader lifting capacities

- Lifting capacities shown should not be exceeded. Weight of all lifting accessories must be deducted from the above lifting capacities.
- Lifting capacities shown include a heel rack, but do not include a grapple. Grapple weight must be deducted from the lifting capacities.
- Lifting capacities are based on machine standing on firm, uniform supporting surface. User must make allowances for job conditions such as soft or uneven ground, sudden stopping of loads, or other unfavorable job conditions.
- Lifting capacities shown do not exceed 75% of minimum tipping loads or 87% of hydraulic capacities. Capacities marked with an asterisk (\*) are limited by hydraulic capacities.
- These capacities apply to machines having 4970 psi boom hoist cylinder pressure.
- Least stable position is over the side.
- Operator should be fully acquainted with the Operator's Manual & Operating Safety Booklet, furnished by the manufacturers before operating the machine.
- Capacities apply only to the machine as originally manufactured and normally equipped by L BX Company LLC. Any additional equipment such as quick attach adapters, thumbs or similar items will require deductions to the lifting capacities.
- Lift capacity ratings are calculated per SAE J2417, "Lift capacity Calculation Method, Knuckle-Boom Log Loaders and Certain Forestry Equipment."

## Standard Equipment

---

- Inte-LX™ Computer System
- Self-diagnostic system
- Five selectable working modes
- One-touch decelerator
- Auto idling system
- Auto idle start
- Low idle up
- Auto engine warm up
- Cushioned attachment control
- Free swing control
- Auto power swing
- Travel alarm
- Nephron® filtration system
- Swing-out oil cooler
- Low noise/low vibration cab floating on 6 fluid filled mounts
- Sliding/reclining, suspension cloth upholstered seat with adjustable arm rests and lumbar support, retracting seat belt
- 3-position tilting consoles
- 4th position on left console for entering and exiting the cab also serves as control lock-out
- Illuminated LCD service monitor
- Climate control heater and air conditioner
- Horn, interior lighting, AM/FM STEREO radio, digital clock, floor mat, cigarette lighter
- Safety glass front windows with automatic lock and intermittent rise-up windshield wiper and washer, large LEXAN® rear/side windows
- Gate lock and gate lock lever (control lock-out device)
- Vandalism locks/guarding
- Common key for cab & house doors, engine hood, tool box, and fuel cap
- Hand grab rails both sides
- Rear view mirror, coat hook, storage compartment
- High-Wide undercarriage
- Chrome plated boom foot pin with oil impregnated bushing
- Heavy Duty upper and lower undercovers
- 4' hydraulically tilting cab riser w/logger guarding
- Grapple open/close/rotating system
- 44' live heel logging front
- 18,550 lbs. (8 415 kg) counterweight

## Optional Equipment

---

- Road Builder Package
- Auxiliary fuel tank for right hand front corner